

**JOHN DEERE 4020 ROW-CROP TRACTOR**  
IMAGE A.1

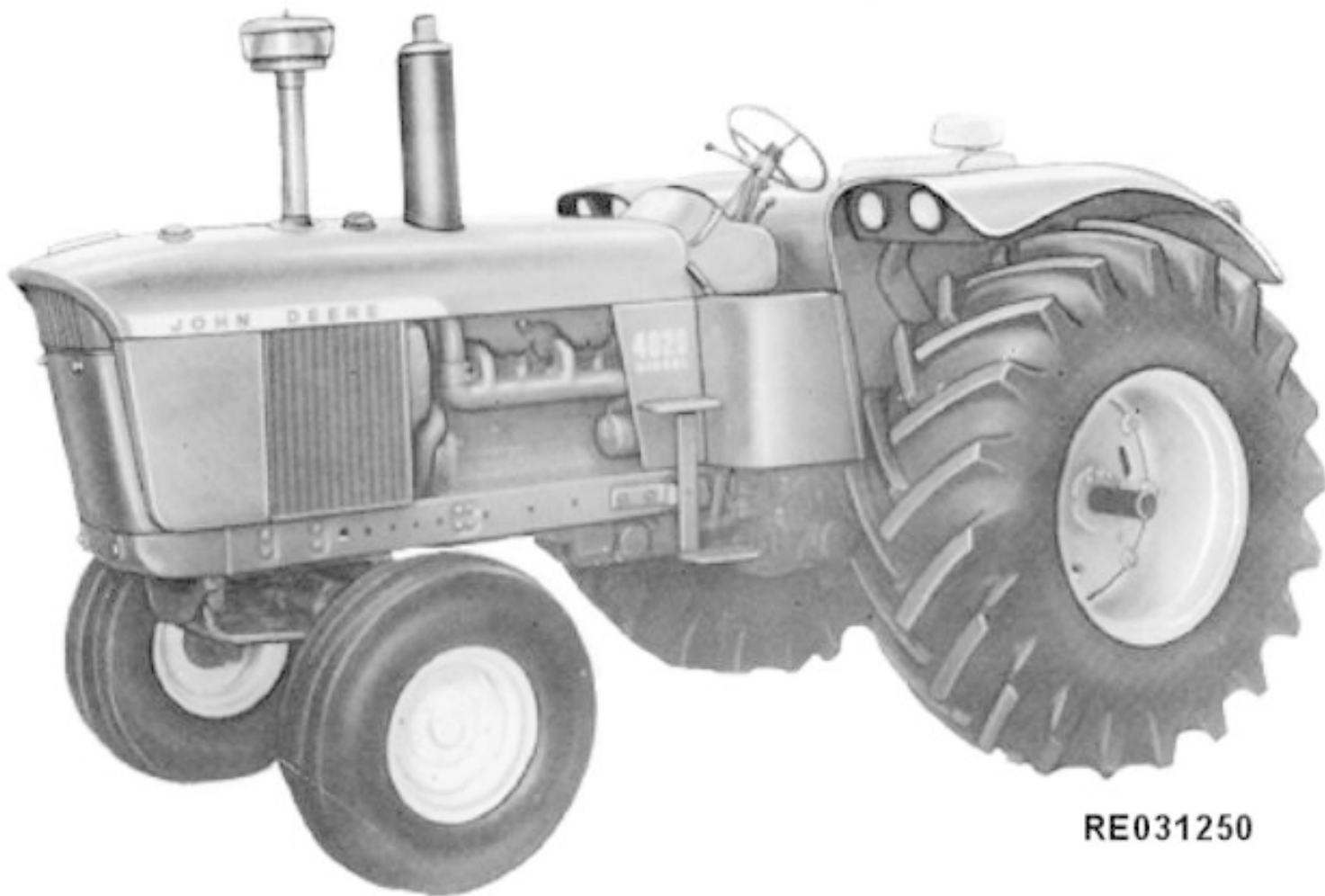


**RE031249**

*(SPECIFICATIONS AND DESIGN SUBJECT TO CHANGE WITHOUT NOTICE)*

**JOHN DEERE 4020 STANDARD TRACTOR**

IMAGE A.1



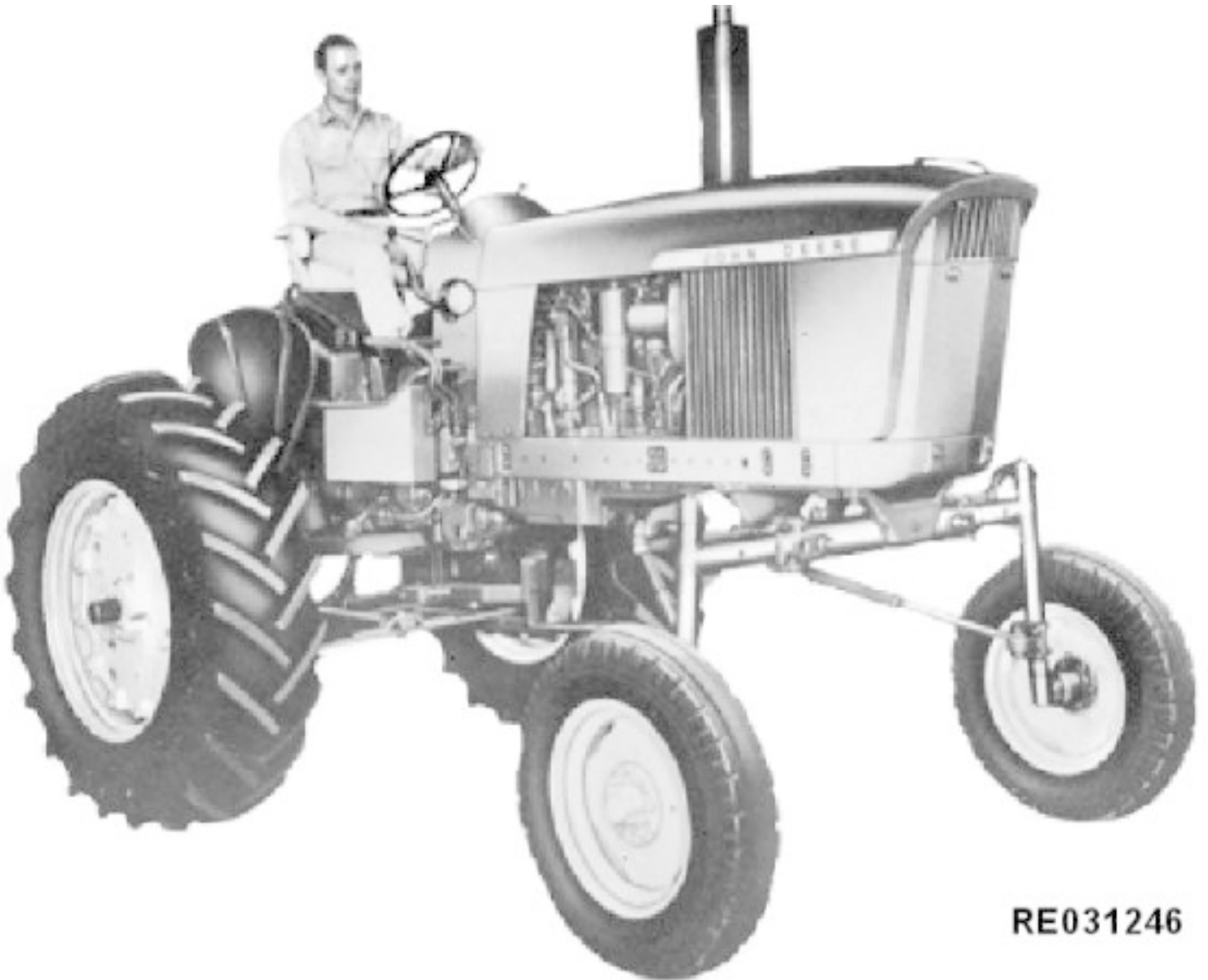
**RE031250**

*(MANUFACTURED 1964-1969)*

*(SPECIFICATIONS AND DESIGN SUBJECT TO CHANGE WITHOUT NOTICE)*

**JOHN DEERE 4020 HI-CROP TRACTOR**

IMAGE A.1



**RE031246**

*(SPECIFICATIONS AND DESIGN SUBJECT TO CHANGE WITHOUT NOTICE)*

**FRONT END EQUIPMENT**

IMAGE A.1



**ADJUSTABLE  
TREAD**

**FIXED TREAD**

**RE031248**

**FRONT END EQUIPMENT**

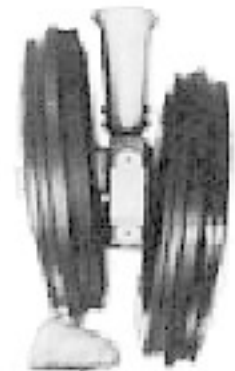
IMAGE A.1



DOUBLE



SINGLE

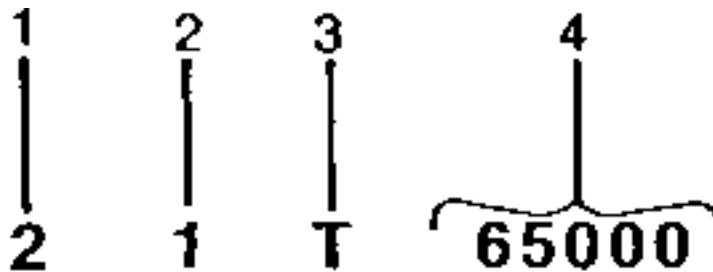


ROLL-O-MATIC

**RE031247**

**BASIC TRACTOR SERIAL NUMBER PRIOR TO 091000**

IMAGE A.1

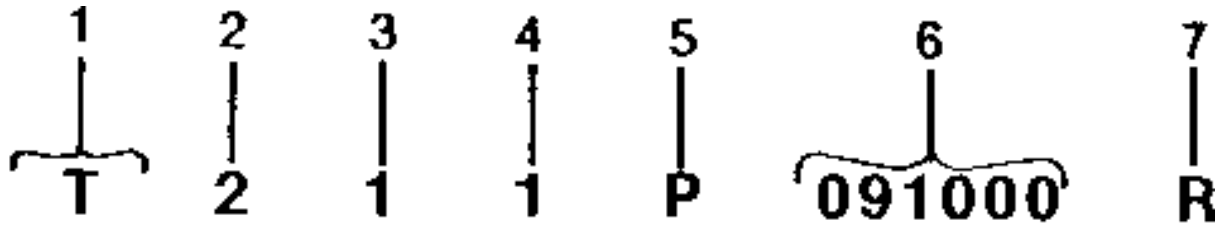


**RWP4281**

1. DESIGNATES MODEL SERIES	2 - 4020
2. DESIGNATES CHASSIS DESIGN	1 - ROW-CROP
	2 - STANDARD
	3 - HI-CROP
3. DESIGNATES TYPE OF UNIT	T - TRACTOR
4. DESIGNATES TRACTOR SERIAL NUMBER	65000

**BASIC TRACTOR SERIAL NUMBER BEGINNING WITH 091000**

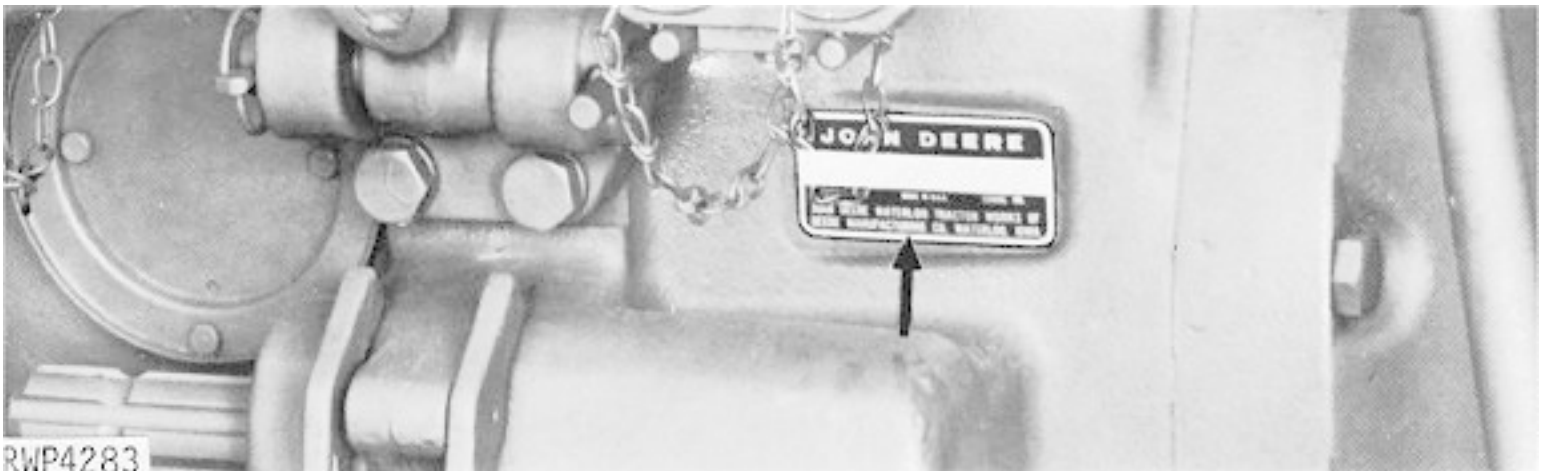
IMAGE A.1

**RWP4282**

1. DESIGNATES TYPE OF UNIT	T - TRACTOR
2. DESIGNATES MODEL SERIES	2 - 4020
3. DESIGNATES CHASSIS DESIGN	1 - ROW-CROP 2 - STANDARD 3 - HI-CROP
4. DESIGNATES ENGINE FUEL TYPE	1 - GASOLINE 2 - LP-GAS 3 - DIESEL
5. DESIGNATES TRANSMISSION TYPE	P - POWER SHIFT R - SYNCRO-RANGE
6. DESIGNATES TRACTOR SERIAL NUMBER	091000
7. DESIGNATES TRACTOR MANUFACTURER	R - JOHN DEERE TRACTOR WORKS

**TRACTOR SERIAL NUMBER PLATE LOCATION**

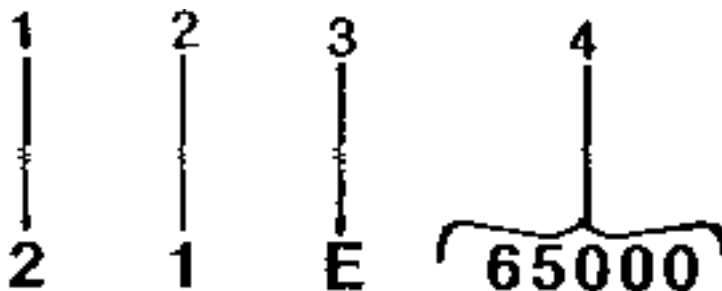
IMAGE A.1



*THE BASIC TRACTOR SERIAL NUMBER PLATE IS LOCATED IN THE UPPER RIGHT-HAND CORNER AT THE REAR OF THE TRANSMISSION CASE.*

**ENGINE SERIAL NUMBER**

IMAGE A.1

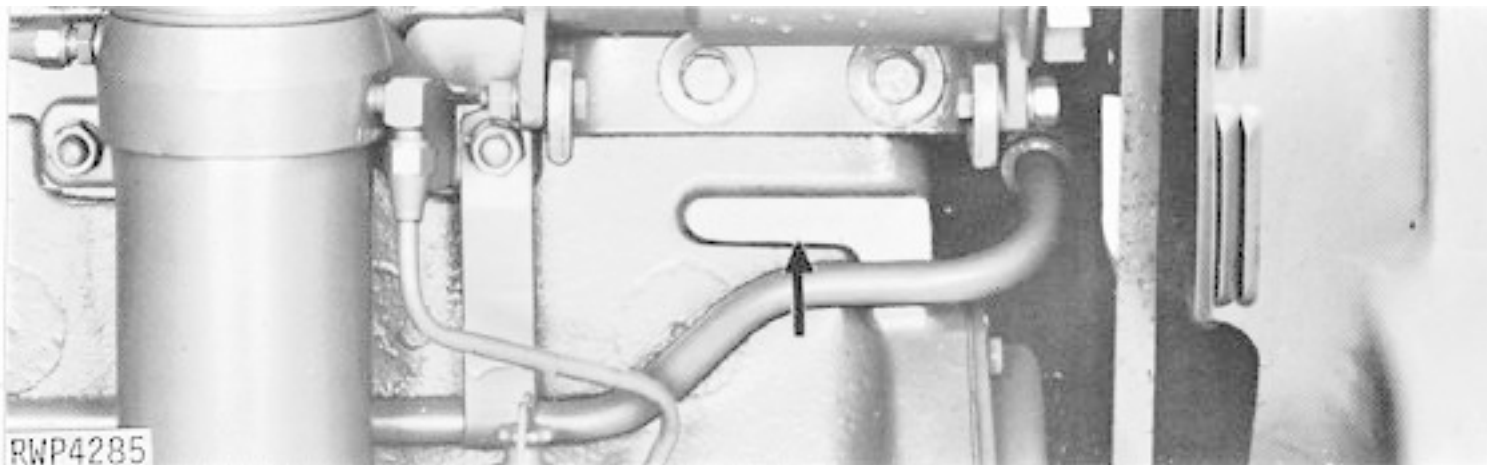


**RWP4284**

1. DESIGNATES SERIES	2 - SERIES 2
2. DESIGNATES FUEL TYPE	1 - GASOLINE
	2 - LP-GAS
	3 - DIESEL
3. DESIGNATES UNIT	M - ENGINE
4. DESIGNATES ENGINE SERIAL NUMBER	65000

**ENGINE SERIAL NUMBER PLATE LOCATION**

IMAGE A.1



*THE ENGINE SERIAL NUMBER PLATE IS STAMPED ON THE RIGHT-HAND SIDE OF THE CYLINDER BLOCK JUST BELOW THE GENERATOR. 6362GR-01,6362LR-01 OR 6404DR-01, 02, 03, 04*

**SERIAL NUMBER LISTING INFORMATION**

Serial number information is listed to show on which machines each part can be used; for example:

- The part can be used on all products.
- 000000 - The part can be used on products beginning with the serial number listed.
- 000000 The part can be used on products up to and including the serial number listed.
- 000000 - 000000 The part can be used on products between and including the serial number listed.
- 15BV1- When a model number begins with 15bv, 14ha, 15pp, 25sc, 2rc, 4rc, 15rs, 3cy, 2sp, or 31sv, it refers to the model number of the brake valve, hydraulic accumulator, hydraulic pump, remote cylinder selective control valve for no rockshaft, remote cylinder selective control valves, remote cylinders, remote cylinders with mechanical stops, rockshaft control valve, steering cylinder, steering metering pump, or steering valve.

When XXXXXX's are listed in place of a serial number, a serial number change was made, but the exact serial number was not available at the time of publication.

**MODEL NUMBERS**

THE FOLLOWING COMPONENTS HAVE MODEL NUMBERS:

BRAKE VALVE	15BV1
HYDRAULIC ACCUMULATOR	14HA2
HYDRAULIC PUMP	1
REMOTE CYLINDER SELECTIVE CONTROL VALVE FOR NO ROCKSHAFT - SINGLE, DUAL OR TRIPLE	25SC1
REMOTE CYLINDER SELECTIVE CONTROL VALVE FOR ROCKSHAFT - SINGLE, DUAL OR TRIPLE	23SC2
REMOTE CYLINDER (76 X 203 MM (3" X 8"))	2RC4
REMOTE CYLINDER WITH MECHANICAL STOP (76 X 203 MM (3" X 8"))	4RC3
ROCKSHAFT CONTROL VALVE	15RS1
STEERING CYLINDER	3CY1
STEERING METERING PUMP	2SP1
STEERING VALVE	31SV1

EACH OF THE ABOVE COMPONENTS HAS A MODEL NUMBER. WHEN THE DESIGN OF ONE OF THESE COMPONENTS IS CHANGED, THE MODEL NUMBER FOR THE NEWLY DESIGNED COMPONENT IS CHANGED.

BEGINNING WITH TRACTOR SERIAL NUMBER 2T84072, THE MODEL NUMBER OF THE HYDRAULIC PUMP WAS DISCONTINUED. AFTER SERIAL NUMBER 2T84072, HYDRAULIC PUMPS ARE IDENTIFIED BY THE TRACTOR SERIAL NUMBER.

**ABBREVIATIONS FOR TRACTOR CHASSIS DESIGN**

WHEN THE LETTERS (RC), (ST), OR (HC) APPEAR AFTER THE DESCRIPTION OF A PART IN THE CATALOG, THEY IDENTIFY THE CHASSIS DESIGN AS FOLLOWS:

RC - ROW-CROP; ST - STANDARD; HC - HI-CROP

**QUANTITY COLUMN OR REMARKS COLUMN**

GENERALLY THE QUANTITY SHOWN IS FOR THE ENTIRE TRACTOR AT ANY GIVEN LOCATION. THERE ARE EXCEPTIONS AS IN WHEEL HARDWARE WHERE ONLY ENOUGH IS SHOWN FOR ONE WHEEL. THE FOLLOWING ABBREVIATIONS ARE USED IN THE REMARKS COLUMN:

NLR	NO LONGER REQUIRED
NA	NOT APPLICABLE
NLA	NO LONGER AVAILABLE
FI	FIELD INSTALLED
LGTH	Length
REMAN FOR	Remanufactured For
SUB FOR	Substitute For
TK	Thickness
W/	With
W/O	Without
Z	Gear and Sprocket Teeth Number

*FI IS AN OPTION THAT MUST BE ORDERED DIRECT FROM THE PRODUCING FACTORY.*

**To The Customer**

The part numbers in this Parts Catalog were correct at the time of publication. Per John Deere policy, we continuously improve our products. Therefore, when ordering parts verify the part numbers with your dealer.

**Bolt and Cap Screw Strength Identification**

Bolts and cap screws required to have high-strength qualities equivalent to metric property class 10.9 (SAE grade 8) or higher are identified throughout this catalog by the description 10.9, 12.9 or 14.9. All standard bolts and cap screws are metric property class 8.8 (SAE grade 5) or lower.

## **Illustrations**

Illustrations in this catalog are only intended as a reference for dealers and customers. These illustrations do not necessarily represent the exact view of the parts.

### **Box-Enclosed Illustrations**

Box-enclosed keyed parts in the illustration are available as a service assembly or an attachment. These parts may also include parts not available for service. The illustrations may not show all individual parts of an attachment. A box not keyed includes non-current parts.

### **Orientation Of Product**

An arrow shown with an illustration is to indicate the direction of product forward travel. Right Hand (RH) and Left Hand (LH) sides are determined by product forward travel.

### **Orientation of Engine**

Right Hand (RH) and Left Hand (LH) sides are determined by standing at flywheel and facing the engine.

### **John Deere Remanufactured Components**

The REMAN parts listed in this catalog are intended for the repair or replacement of failed or worn original equipment components. John Deere Reman components are manufactured to stringent John Deere standards and produced to original John Deere specifications that incorporates the latest design and performance improvement updates.