



RE031225

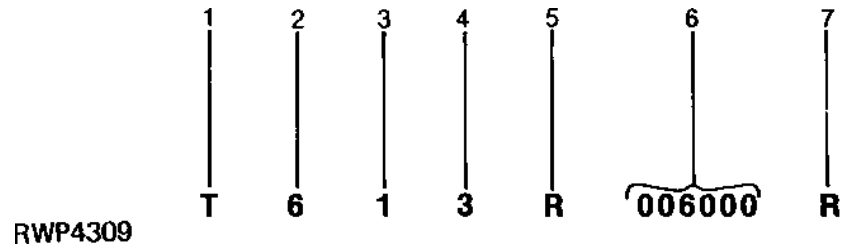
*JOHN DEERE 4320 TRACTOR
(MANUFACTURED 1971-1972)*

(SPECIFICATIONS AND DESIGN SUBJECT TO CHANGE WITHOUT NOTICE)

SERIAL NUMBERS

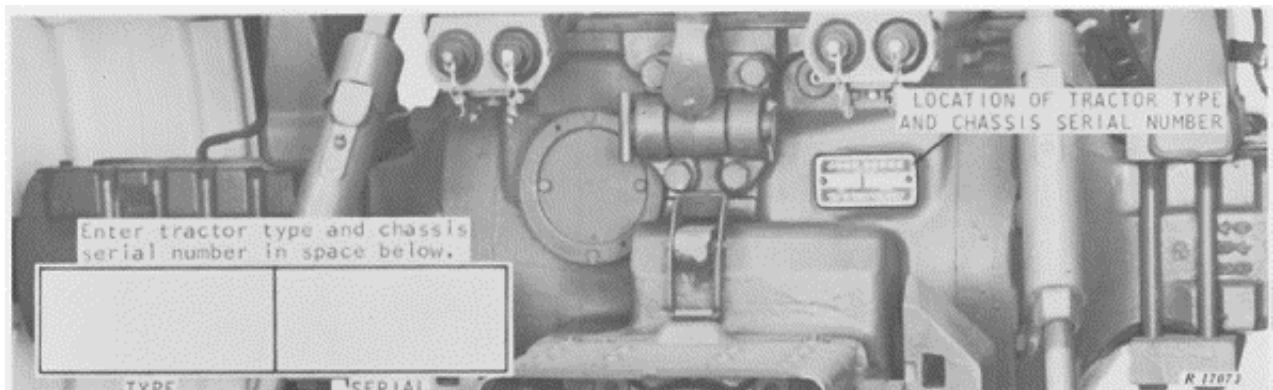
EACH 4320 TRACTOR HAS THE FOLLOWING SERIAL NUMBER PLATES: BASIC TRACTOR AND ENGINE.

BASIC TRACTOR SERIAL NUMBER



1. DESIGNATES TYPE OF UNIT
2. DESIGNATES MODEL SERIES
3. DESIGNATES CHASSIS DESIGN
4. DESIGNATES TYPE OF ENGINE
5. DESIGNATES TYPE OF TRANSMISSION
6. DESIGNATES TRACTOR SERIAL NUMBER
7. DESIGNATES TRACTOR MANUFACTURER

- T - TRACTOR
6 - 4320
1 - ROW-CROP
3 - DIESEL
R - SYNCRO-RANGE
R - JOHN DEERE TRACTOR WORKS



THE BASIC TRACTOR SERIAL NUMBER IS STAMPED ON A PLATE LOCATED AT THE REAR OF THE TRANSMISSION CASE.

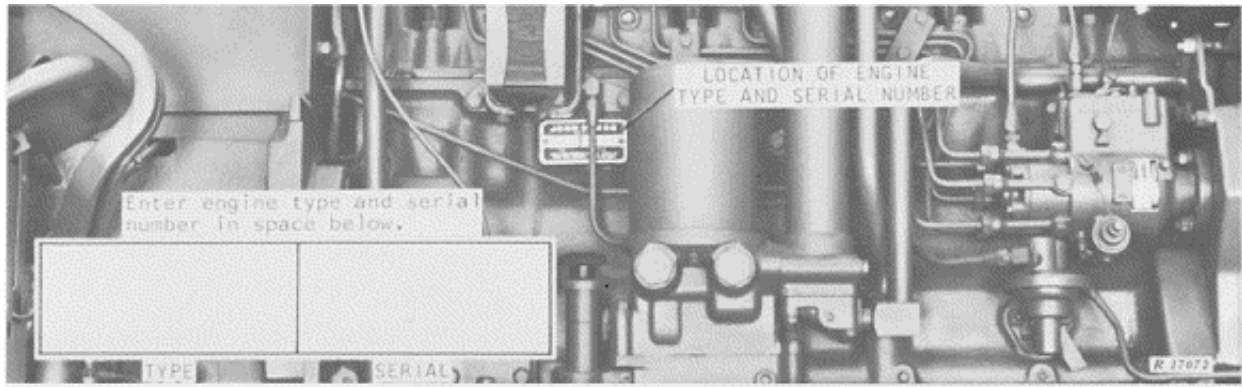
ENGINE SERIAL NUMBER

RWP4310

1	2	3	4	5	6	7
6	404	T	R-	03	280001	R

1. DESIGNATES NUMBER OF CYLINDERS
2. DESIGNATES CUBIC INCH DISPLACEMENT
3. DESIGNATES TYPE OF AIR INTAKE SYSTEM
4. DESIGNATES USER FACTORY
5. DESIGNATES THE VERSION
6. DESIGNATES ENGINE SERIAL NUMBER
7. DESIGNATES ENGINE MANUFACTURER

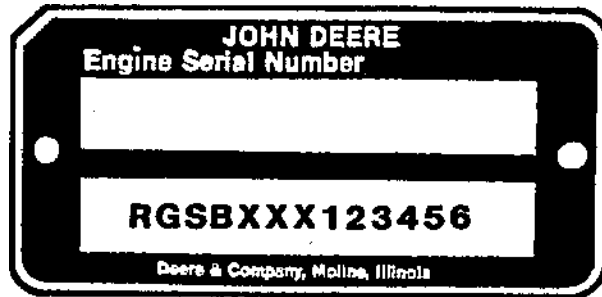
- 6 - SIX CYLINDERS
404
T - TURBOCHARGED
R - JOHN DEERE TRACTOR WORKS
03- THIRD
R - JOHN DEERE TRACTOR WORKS



THE ENGINE SERIAL NUMBER IS STAMPED ON A PLATE LOCATED ON THE RIGHT-HAND SIDE OF THE ENGINE.

SHORT BLOCK SERIAL NUMBER PLATE

(-RGSB404882500)



RGP2856

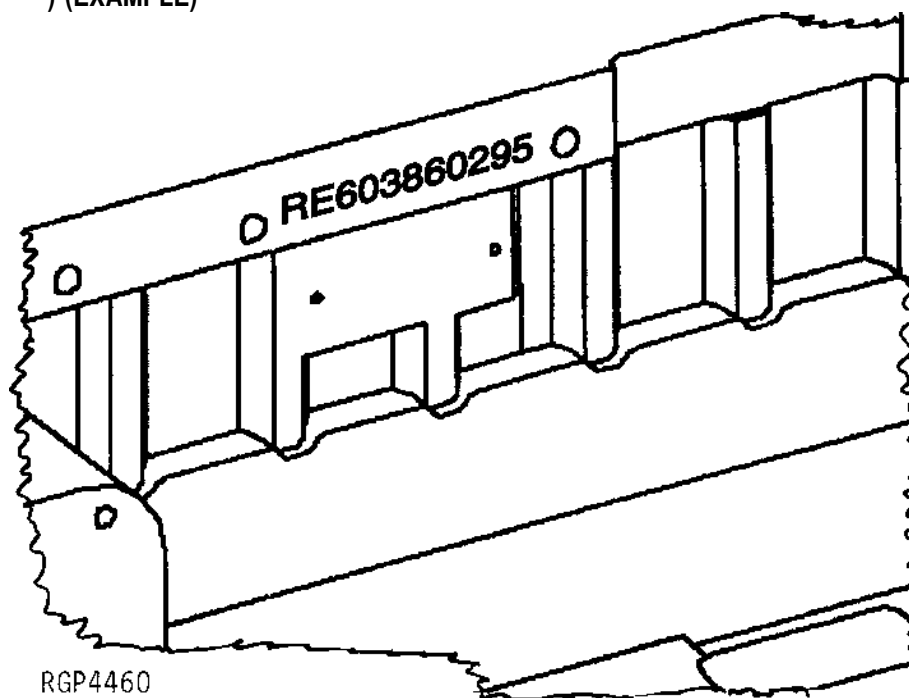
A SHORT BLOCK SERIAL NUMBER PLATE PLUS 2-37H44 DRIVE SCREWS ARE USED TO ATTACH TO REPLACEMENT SHORT BLOCK ASSEMBLIES. THIS NUMBER WILL BE REFERRED TO WHEN NEW PARTS AFFECT THE SHORT BLOCK ASSEMBLY. THE PREVIOUS ENGINE SERIAL NUMBER SHOULD BE STAMPED INTO THE BLANK SPACE PROVIDED, AS A REFERENCE FOR YOUR DEALER.

1. DESIGNATES ENGINE MANUFACTURER
2. DESIGNATES REPLACEMENT SHORT BLOCK
3. DESIGNATES CUBIC INCH
4. DESIGNATES THE PRODUCTION DATE
5. DESIGNATES COMPONENT SEQUENCE

RG - WATERLOO ENGINE WORKS
SB
XXX- 404
1234
56

(RE603860295-

SHORT BLOCK SERIAL NUMBER IDENTIFICATION
) (EXAMPLE)



SERIAL NUMBER STAMPED INTO CASTING OF BLOCK NEAR PREVIOUS SERIAL NUMBER PLATE.

EXAMPLE: RE603860295

1. DESIGNATES SERVICE PART NUMBER
2. DESIGNATES MONTH ASSEMBLED
3. DESIGNATES YEAR ASSEMBLED

RE60386
02
95

SERIAL NUMBER LISTING INFORMATION

SERIAL NUMBER INFORMATION IS LISTED TO SHOW ON WHICH MACHINES EACH PART CAN BE USED; FOR EXAMPLE:

- THE PART CAN BE USED ON ALL MACHINES.
- 000000- THE PART CAN BE USED ON ALL MACHINES BEGINNING WITH THE SERIAL NUMBER LISTED.
- 000000 THE PART CAN BE USED ON ALL MACHINES UP TO AND INCLUDING THE SERIAL NUMBER LISTED.
- 000000-000000 THE PART CAN BE USED ON ALL MACHINES BETWEEN AND INCLUDING THE SERIAL NUMBERS LISTED.

- 15BV1- WHEN A MODEL NUMBER BEGINS WITH 15BV, 14HA, 15PP, 25SC, 2RC, 4RC, 15RS, 3CY, 2SP, OR 31SV, IT REFERS TO THE MODEL NUMBER OF THE BRAKE VALVE, HYDRAULIC ACCUMULATOR, HYDRAULIC PUMP, REMOTE CYLINDER SELECTIVE CONTROL VALVE FOR NO ROCKSHAFT, REMOTE CYLINDER SELECTIVE CONTROL VALVES, REMOTE CYLINDERS, REMOTE CYLINDERS WITH MECHANICAL STOPS, ROCKSHAFT CONTROL VALVE, STEERING CYLINDER, STEERING METERING PUMP, OR STEERING VALVE.

WHEN XXXXXX'S ARE LISTED IN PLACE OF A SERIAL NUMBER, A SERIAL NUMBER CHANGE WAS MADE BUT THE EXACT SERIAL NUMBER WAS NOT AVAILABLE WHEN THE CATALOG WAS PRODUCED.

MODEL NUMBERS

THE COMPONENTS LISTED BELOW HAVE MODEL NUMBERS:

ACCUMULATOR 1HA3
BRAKE VALVE 7BV2
FLEXIBLE OIL LINE COUPLER 3DL1
HYDRAULIC PUMP. 1PP4
PRESSURE CONTROL VALVE. 2PC1
REMOTE CYLINDER SELECTIVE CONTROL VALVE - SINGLE.21SC1
REMOTE CYLINDER SELECTIVE CONTROL VALVE - DUAL.12SC1
REMOTE CYLINDER SELECTIVE CONTROL VALVE - TRIPLE.22SC1
REMOTE CYLINDER WITH HYDRAULIC STOP 2RC4
REMOTE CYLINDER WITH MECHANICAL STOP. 4RC3
ROCKSHAFT CONTROL VALVE 9RS1
STEERING CYLINDER 1CY1
STEERING VALVE. 3SY2

EACH OF THE ABOVE COMPONENTS HAS A MODEL NUMBER. WHEN THE DESIGN OF ONE OF THESE COMPONENTS IS CHANGED, THE MODEL NUMBER FOR THE NEWLY DESIGNED COMPONENT IS CHANGED.

DIRECTION ARROW

ARROWS ARE USED WITH ILLUSTRATIONS TO INDICATE THE FRONT OF THE UNIT. "RIGHT-HAND" AND "LEFT-HAND" SIDES ARE DETERMINED BY FACING IN THE DIRECTION OF MACHINE FORWARD TRAVEL.

BOX-ENCLOSED ILLUSTRATIONS

A KEY NUMBER, SHOWN IN THE PARTS LIST, IS ASSIGNED TO A BOX ENCLOSING ALL PARTS SOLD AS A SERVICE ASSEMBLY.

BOLT AND CAP SCREW STRENGTH IDENTIFICATION

U.S. CUSTOMARY DIMENSIONED PRODUCT: BOLTS AND CAP SCREWS REQUIRED TO HAVE HIGH-STRENGTH QUALITIES EQUIVALENT TO SAE GRADE 8 ARE IDENTIFIED THROUGHOUT THIS CATALOG BY THE DESCRIPTION HS SAE 8. ALL STANDARD BOLTS AND CAP SCREWS ARE SAE GRADE 5 OR LOWER.

METRIC DIMENSIONED PRODUCT: BOLTS AND CAP SCREWS REQUIRED TO HAVE HIGH-STRENGTH QUALITIES EQUIVALENT TO PROPERTY CLASS 10.9 ARE IDENTIFIED THROUGHOUT THIS CATALOG BY THE DESCRIPTION HS 10.9. ALL STANDARD BOLTS AND CAP SCREWS ARE PROPERTY CLASS 8.8 OR LOWER.

JDM REMANUFACTURED COMPONENTS

THE SERVICE PARTS LISTED IN THIS CATALOG ARE INTENDED FOR THE REPAIR OF ORIGINAL EQUIPMENT COMPONENTS. ALTHOUGH MOST SERVICE PARTS MAY BE USED TO REPAIR REMANUFACTURED COMPONENTS, THE REMANUFACTURING PROCESS MAY CHANGE PARTS SUFFICIENTLY SO THAT SERVICE PARTS ARE INADEQUATE OR NOT USABLE.

TRADEMARKS

THROUGHOUT THIS PARTS CATALOG, YOU WILL FIND THE FOLLOWING DEERE AND COMPANY TRADEMARKS:

HYDRACUSHIONED™
PERSONAL - POSTURE™
QUAD - RANGE™
INVESTIGATOR™ II

ROLL - GARD®
SOUND - GARD®
TORQ - GARD SUPREME®
HY - GARD®
QUICK - TATCH®

QUANTITY COLUMN OR REMARKS COLUMN

GENERALLY THE QUANTITY SHOWN IS FOR THE ENTIRE TRACTOR AT ANY GIVEN LOCATION. THERE ARE EXCEPTIONS AS IN WHEEL HARDWARE WHERE ONLY ENOUGH IS SHOWN FOR ONE WHEEL.

THE FOLLOWING ABBREVIATIONS ARE USED IN THE REMARKS COLUMN:

NLR - NO LONGER REQUIRED

NA - NOT APPLICABLE

NLA - NO LONGER AVAILABLE

FI - FIELD INSTALLED

FI IS AN OPTION THAT MUST BE ORDERED DIRECT FROM THE PRODUCING FACTORY.

SECTION INDEX

GENERAL INFORMATION	10
ENGINE.	20
FUEL AND AIR.	30
ELECTRICAL	40
POWER TRAIN	50
STEERING AND BRAKES	60
HYDRAULICS.	70
WHEELS, FRONT AXLES, SHEET METAL.	80
OPERATOR'S STATION.	90
NUMERICAL INDEX	95