

INTRODUCTION AND CUSTOMER INFORMATION



*RIGHT SIDE VIEW OF JOHN DEERE JD440 SKIDDER
(MANUFACTURED 1965-1967)*

(DUBUQUE SERIAL NO. - 49999)

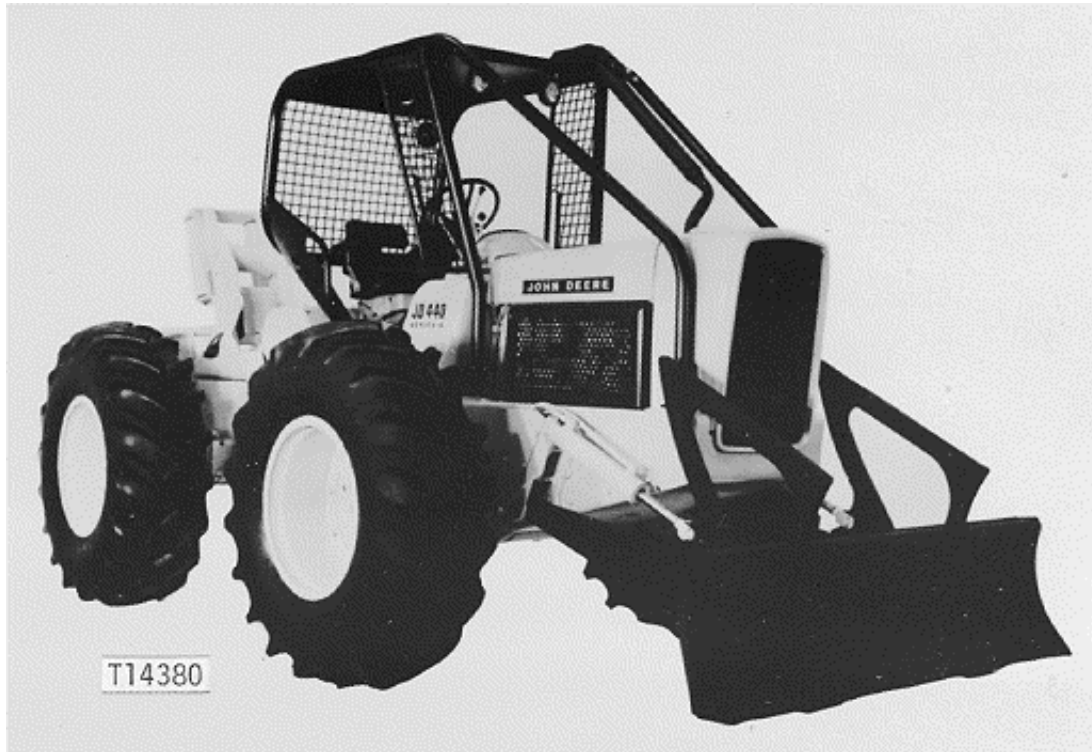
(WELLAND SERIAL NO. - 19999)

TO THE CUSTOMER

THE PART NUMBERS IN THIS PARTS CATALOG WERE CORRECT AT THE TIME YOUR CATALOG WAS PUBLISHED. IT IS OUR POLICY TO CONSTANTLY IMPROVE OUR MACHINES AND, THEREFORE, PART NUMBERS MAY CHANGE. WHEN ORDERING PARTS, VERIFY PART NUMBERS THROUGH YOUR DEALER.

(SPECIFICATIONS AND DESIGN SUBJECT TO CHANGE WITHOUT NOTICE.)

INTRODUCTION AND CUSTOMER INFORMATION



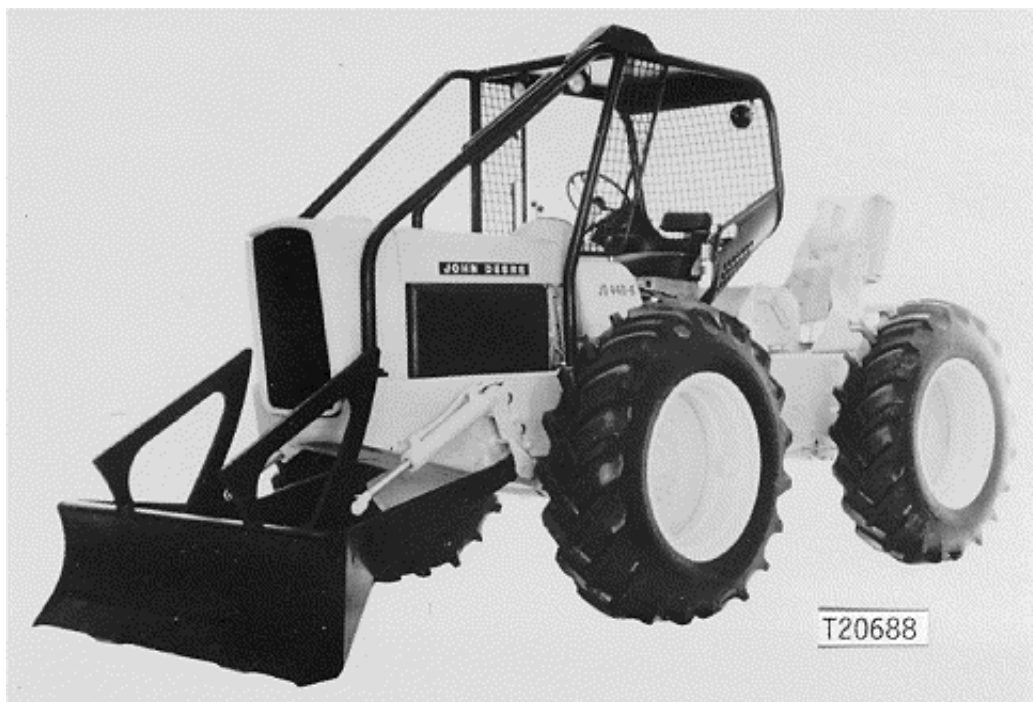
*LEFT SIDE VIEW OF JOHN DEERE JD440 SERIES-A SKIDDER
(MANUFACTURED 1967-1970)
(DUBUQUE SERIAL NO. 50000-119500)
(WELLAND SERIAL NO. 20000- 21299)*

TO THE CUSTOMER

THE PART NUMBERS IN THIS PARTS CATALOG WERE CORRECT AT THE TIME YOUR MACHINE WAS MANUFACTURED. IT IS OUR POLICY TO CONSTANTLY IMPROVE OUR MACHINES AND, THEREFORE, PART NUMBERS MAY CHANGE. WHEN ORDERING PARTS, VERIFY PART NUMBERS THROUGH YOUR DEALER'S CATALOG WHICH IS UP-TO-DATE.

(SPECIFICATIONS AND DESIGN SUBJECT TO CHANGE WITHOUT NOTICE.)

INTRODUCTION AND CUSTOMER INFORMATION



*LEFT SIDE VIEW OF JOHN DEERE JD440-B SKIDDER
(MANUFACTURED 1970-1976)*

*(DUBUQUE SERIAL NO. 119501-)
(WELLAND SERIAL NO. 21300-)*

TO THE CUSTOMER

THE PART NUMBERS IN THIS PARTS CATALOG WERE CORRECT AT THE TIME YOUR MACHINE WAS MANUFACTURED. IT IS OUR POLICY TO CONSTANTLY IMPROVE OUR MACHINES AND, THEREFORE, PART NUMBERS MAY CHANGE. WHEN ORDERING PARTS, VERIFY PART NUMBERS THROUGH YOUR DEALER'S CATALOG WHICH IS UP-TO-DATE.

(SPECIFICATIONS AND DESIGN SUBJECT TO CHANGE WITHOUT NOTICE.)

SERIAL NUMBERS LOCATION

EACH JD440, JD440 SERIES-A AND JD440-B SKIDDER HAS FOUR SERIAL NUMBERS: ONE FOR THE BASIC SKIDDER, ONE FOR THE ENGINE, ONE FOR THE REPLACEMENT HYDRAULIC PUMP AND ONE FOR THE NUMBER 3305 WINCH WITH WINCH SERIAL NUMBERS 28563 AND ABOVE.

THE BASIC SKIDDER SERIAL NUMBER IS LOCATED ON THE RIGHT-HAND SIDE OF THE CLUTCH HOUSING.

THE ENGINE SERIAL NUMBER PLATE IS LOCATED BELOW AND TO REAR OF THE FUEL PUMP MOUNTING BOSS ON THE RIGHT SIDE OF THE CYLINDER BLOCK.

THE WINCH SERIAL NUMBER IS LOCATED AT THE TOP OF THE WINCH HOUSING.

THE REPLACEMENT PUMP SERIAL NUMBER PLATE IS LOCATED ON THE UPPER RIGHT-HAND CORNER OF THE HYDRAULIC PUMP.

LEFT SIDE AND RIGHT SIDE, FRONT AND REAR OF THE SKIDDER ARE VIEWED BY FACING IN THE DIRECTION OF SKIDDER FORWARD TRAVEL.

TWO SERIAL NUMBER COLUMNS ARE SHOWN ON MOST PAGES OF THIS CATALOG. THE COLUMNS, IDENTIFIED AS DUBUQUE SERIAL NO. AND WELLAND SERIAL NO., REFER TO THE MANUFACTURER OF THE SKIDDER. BE SURE TO USE THE COLUMN WHICH APPLIES TO YOUR APPLICATION.

WHENEVER SERIAL NUMBERS ARE REQUIRED ON WARRANTY CLAIMS OR CORRESPONDENCE PERTAINING TO THIS PRODUCT, IT IS EXTREMELY IMPORTANT THAT ALL CHARACTERS BE FURNISHED. THIS POINT CANNOT BE OVEREMPHASIZED.

BASIC SKIDDER SERIAL NUMBER

(DUBUQUE SERIAL NO. -119500)
(WELLAND SERIAL NO. - 21299)

1 2 3 4 5 6 7
| | | | | | |
T 5A1R 010001 T

T13470

1. THE FIRST LETTER DESIGNATES TRACTOR.
2. THIS NUMBER DESIGNATES THE SERIES.
3. THIS LETTER DESIGNATES THE TRACTOR STYLE.
4. THIS NUMBER OR LETTER DESIGNATES THE FUEL TYPE OF ENGINE.
5. THIS LETTER DESIGNATES THE TYPE OF TRANSMISSION.
6. THESE SIX DIGITS DESIGNATE THE PORTION OF THE TRACTOR SERIAL NUMBER SHOWN IN THE SERIAL NUMBER COLUMN OF THIS CATALOG.
7. THIS LETTER DESIGNATES THE MANUFACTURER OF THE TRACTOR.

T - TRACTOR
5 - JD440
A - STANDARD 4-WHEEL DRIVE
1 - GASOLINE (JD440)
3 - DIESEL (JD440)
B - DIESEL (JD440 SERIES-A AND JD440-B)
R - SYNCRO-RANGE
P - POWER-SHIFT

T - JOHN DEERE DUBUQUE WORKS

BASIC SKIDDER SERIAL NUMBER
(DUBUQUE SERIAL NO. 119501-)
(WELLAND SERIAL NO. 21300-)

1 2 3 4
440B A 000000 T

T23372

1. DIGITS 1 THROUGH 4 DESIGNATE THE SKIDDER MODEL.

440B - JD440-B
2. DIGIT 5 DESIGNATES THE SKIDDER TYPE, AXLE, WHEELBASE, AND TRANSMISSION.

A - SYNCRO-RANGE SKIDDER
C - POWER-SHIFT SKIDDER WITH 2.26M (89") WHEELBASE
D - POWER-SHIFT SKIDDER WITH 2.63M (103.5") WHEELBASE
E - POWER-SHIFT SKIDDER WITH 2.63M (103.5") WHEELBASE AND 2.3M (94") AXLE
K - POWER-SHIFT DRAWBAR SKIDDER WITH 2.26M (89") WHEELBASE
L - POWER-SHIFT DRAWBAR SKIDDER WITH 2.63M (103.5") WHEELBASE
N - SYNCRO-RANGE DRAWBAR SKIDDER
3. DIGITS 6 THROUGH 11 DESIGNATE THE SKIDDER SERIAL NUMBER SHOWN IN THE SERIAL NUMBER COLUMN OF THIS CATALOG.
4. DIGIT 12 DESIGNATES THE MANUFACTURER OF THE SKIDDER.

T - JOHN DEERE DUBUQUE WORKS

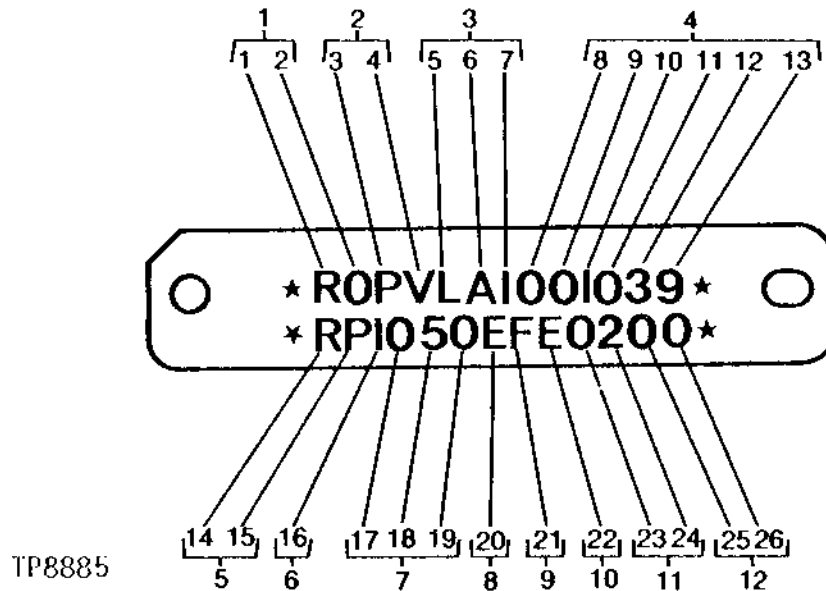
ENGINE DISPLACEMENT

THE DIESEL ENGINE DISPLACEMENT BEFORE SERIAL NUMBER 50000 WAS 202 CUBIC INCHES (3316 CM3). THE DIESEL ENGINE DISPLACEMENT AFTER SERIAL NUMBER 50000 IS 219 CUBIC INCHES (3588 CM3).

THE GASOLINE ENGINE DISPLACEMENT IS 180 CUBIC INCHES (2956 CM3).

THE GASOLINE ENGINE OPTION WAS DISCONTINUED AT SERIAL NUMBER 49999.

HYDRAULIC PUMP SERIAL NUMBER



- | | |
|---|-----------------------|
| 1. DIGITS 1 AND 2 DESIGNATE THE PRODUCING UNIT. | COMPONENT WORKS |
| 2. DIGITS 3 AND 4 DESIGNATE THE PUMP TYPE | VARIABLE DISPLACEMENT |
| 3. DIGITS 5, 6, AND 7 DESIGNATE THE PUMP MODEL NUMBER. | LA1 |
| 4. DIGITS 8 THROUGH 13 DESIGNATE THE PUMP SERIAL NUMBER. | 000000 |
| 5. DIGITS 14 AND 15 DESIGNATE THE PUMP DESIGN. | RADIAL PUMP |
| 6. DIGIT 16 DESIGNATES THE PUMP CLASSIFICATION. | 1 |
| 7. DIGITS 17, 18 AND 19 DESIGNATE THE METRIC DISPLACEMENT PER REVOLUTION. | 050 CM3 |
| 8. DIGIT 20 DESIGNATES THE PORT ARRANGEMENT ON THE PRIMARY HOUSING. | E |
| 9. DIGIT 21 DESIGNATES THE PORT ARRANGEMENT ON THE SECONDARY HOUSING. | F |
| 10. DIGIT 22 DESIGNATES THE PUMP ROTATION. | E |
| 11. DIGITS 23 AND 24 DESIGNATE THE CONTROL VALVE OPTION. | 02 |
| 12. DIGITS 25 AND 26 ARE BLANK. | |

SERIAL NUMBER LISTING INFORMATION

SERIAL NUMBER INFORMATION IS LISTED TO SHOW ON WHICH MACHINES EACH PART CAN BE USED; FOR EXAMPLE:

- THE PART CAN BE USED ON ALL MACHINES.
- 000000- THE PART CAN BE USED ON ALL MACHINES BEGINNING WITH THE SERIAL NUMBER LISTED.
- 000000 THE PART CAN BE USED ON ALL MACHINES UP TO AND INCLUDING THE SERIAL NUMBER LISTED.
- 000000-000000 THE PART CAN BE USED ON ALL MACHINES BETWEEN AND INCLUDING THE SERIAL NUMBERS LISTED.

WHEN XXXXXX'S ARE LISTED IN PLACE OF A SERIAL NUMBER, A SERIAL NUMBER CHANGE WAS MADE BUT THE EXACT SERIAL NUMBER WAS NOT AVAILABLE WHEN THE CATALOG WAS PRODUCED.

DIRECTION ARROW

ARROWS ARE USED WITH ILLUSTRATIONS TO INDICATE THE FRONT OF THE UNIT. "RIGHT-HAND" AND "LEFT-HAND" SIDES ARE DETERMINED BY FACING IN THE DIRECTION OF MACHINE FORWARD TRAVEL.

BOX-ENCLOSED ILLUSTRATIONS

A KEY NUMBER, SHOWN IN THE PARTS LIST, IS ASSIGNED TO A BOX ENCLOSING ALL PARTS SOLD AS A SERVICE ASSEMBLY.

COMPLETE GOODS LISTINGS

COMPLETE GOODS ARE LISTED IN BOLD FACE TYPE. ORDER SEPARATELY. DO NOT INCLUDE ON REPLACEMENT PARTS ORDER.

SI UNITS OF MEASURE

METRIC DIMENSIONS ARE GIVEN, WHERE APPLICABLE, THROUGHOUT THIS PARTS CATALOG.

CHANGE INDICATOR LINE

CHANGES AFFECTING THE ORDERING OF PARTS ARE IDENTIFIED BY VERTICAL LINES MARKED IN THE LEFT-HAND MARGIN OF REVISED PARTS LISTING IMAGES. A LINE IS ALSO AT THE LEFT-HAND EDGE OF THE SAME PART NUMBER IN THE NUMERICAL INDEX TO SHOW THE LOCATION OF REVISED INFORMATION.

COMPLETE COMPONENTS

THIS CATALOG LISTS COMPLETE COMPONENTS IN A SPECIAL SECTION. THE PURPOSE OF THIS SECTION IS TO AID DEALERS IN PLANNING WHAT COMPONENTS TO STOCK FOR THEIR COMPONENT EXCHANGE PROGRAM. WHILE MOST OF THE ITEMS ARE NORMALLY STOCKED AT THE JOHN DEERE PARTS DISTRIBUTION WAREHOUSE (PDW), SOME COMPONENTS ARE ONLY AVAILABLE FROM FACTORIES. IT IS ESSENTIAL TO PLAN AHEAD IN DEVELOPING A COMPONENT EXCHANGE PROGRAM BECAUSE SOME OF THE FACTORY-SUPPLIED COMPONENTS HAVE AN EXTENDED LEAD TIME.

IN ADDITION TO CURRENTLY AVAILABLE COMPONENTS, THIS SECTION ALSO CONTAINS NUMBERS FOR COMPONENTS WHICH HAVE BEEN SUBSTITUTED AND/OR ARE NO LONGER AVAILABLE. PARTS NO LONGER AVAILABLE ARE CODED AND ARE INCLUDED FOR REFERENCE ONLY.

FOR ADDITIONAL INFORMATION ON SPECIAL ORDERING PROCEDURES FOR THESE PARTS, PLEASE CONSULT YOUR PARTS ADMINISTRATION MANUAL OR CONTACT YOUR JOHN DEERE INDUSTRIAL REGION PRODUCT SUPPORT DEVELOPMENT MANAGER.

SECTION INDEX

GENERAL INFORMATION	5
ENGINE	10
AIR CLEANER, MUFFLER AND MANIFOLD	15
SPEED CONTROL LINKAGE	20
COOLING SYSTEM	25
FUEL SYSTEM	30
FUEL INJECTION PUMP AND CARBURETOR	35
CLUTCH AND CLUTCH HOUSING	40
TRANSMISSION	45
DIFFERENTIAL AND DIFFERENTIAL OIL LINES	50
AXLE AND AXLE HOUSING	55
WHEELS AND WHEEL WEIGHTS	60
STEERING	65
HYDRAULIC PUMP, CONTROL VALVE, ACCUMULATOR, AND LINES	70
BRAKES	75
HOOD, GRILLE, FENDERS, CANOPY, FRAMES AND FIRE SUPPRESSION	80
BLADE, LOG GRAPPLE AND HYDRAULICS	85
WINCH	90
INSTRUMENTS, SWITCHES, GAUGES AND WIRING	95
STARTING MOTOR, ALTERNATOR, REGULATOR AND BATTERIES	100
DECALS AND GASKET SETS	105
OIL, VALVE STEM LUBRICANT AND STORAGE KIT	110
NUMERICAL INDEX	120