



RE031311

*JOHN DEERE 4520 TRACTOR
(MANUFACTURED 1969-1970)*

(SPECIFICATIONS AND DESIGN SUBJECT TO CHANGE WITHOUT NOTICE)

SERIAL NUMBERS

EACH 4520 TRACTOR HAS THE FOLLOWING SERIAL NUMBER PLATES: BASIC TRACTOR AND ENGINE.

BASIC TRACTOR SERIAL NUMBER

RWP4221

1	2 3 4	5	6	7
T	8 1 3	R	001000	R

1. DESIGNATES TYPE OF UNIT
2. DESIGNATES MODEL SERIES
3. DESIGNATES CHASSIS DESIGN
4. DESIGNATES ENGINE FUEL TYPE
5. DESIGNATES TRANSMISSION TYPE
6. DESIGNATES TRACTOR SERIAL NUMBER
7. DESIGNATES TRACTOR MANUFACTURER

- T - TRACTOR
8 - 4520
1 - ROW-CROP
2 - STANDARD
3 - DIESEL
P - POWER SHIFT
R - SYNCRO-RANGE

R - JOHN DEERE TRACTOR WORKS



THE BASIC TRACTOR SERIAL NUMBER PLATE IS LOCATED IN THE UPPER RIGHT-HAND CORNER AT THE REAR OF THE TRANSMISSION CASE.

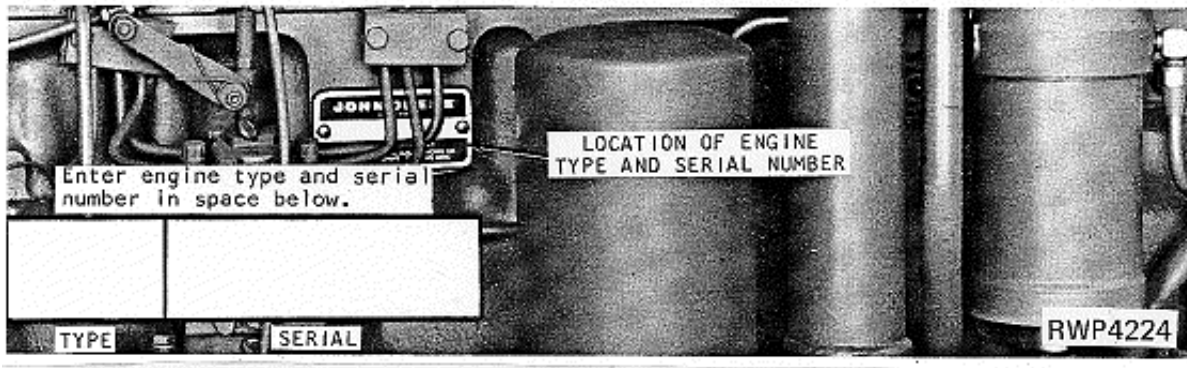
ENGINE SERIAL NUMBER

RWP4222

1	2	3	4	5	6	7
M	2	5	R	0	215000	R

1. DESIGNATES UNIT
2. DESIGNATES SERIES
3. DESIGNATES TYPE OF AIR INTAKE SYSTEM
4. DESIGNATES UNIT APPLICATION
5. DESIGNATES VARIATION
6. DESIGNATES ENGINE SERIAL NUMBER
7. DESIGNATES ENGINE MANUFACTURER

- M - ENGINE
2 - SERIES 2
5 - TURBOCHARGED
R - JOHN DEERE TRACTOR WORKS
0 - BEGINNING
R - JOHN DEERE TRACTOR WORKS



THE ENGINE SERIAL NUMBER PLATE IS LOCATED ON THE RIGHT-HAND SIDE OF THE ENGINE.

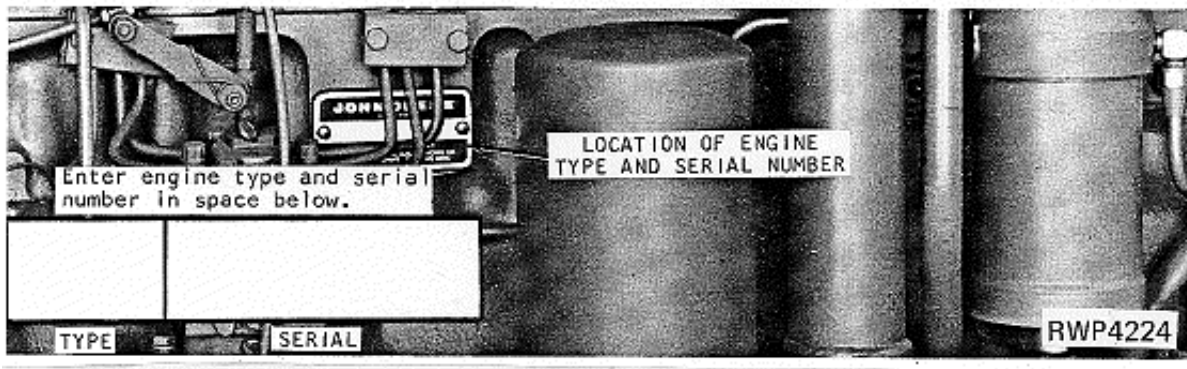
ENGINE SERIAL NUMBER

RWP4225

1	2	3	4	5	6
404	T	R	O	246896	R

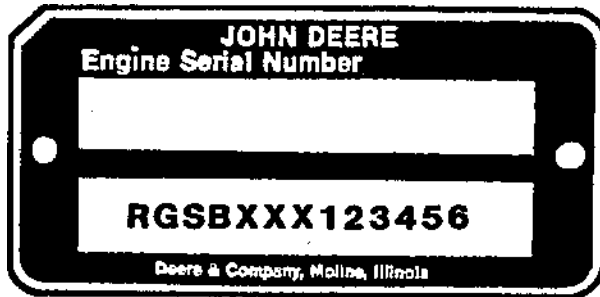
1. DESIGNATES CUBIC INCH DISPLACEMENT
2. DESIGNATES TYPE OF AIR INTAKE SYSTEM
3. DESIGNATES USER FACTORY
4. DESIGNATES VARIATION
5. DESIGNATES ENGINE SERIAL NUMBER
6. DESIGNATES MANUFACTURER

404 CUBIC INCH
T - TURBOCHARGED
R - JOHN DEERE TRACTOR WORKS
O - BEGINNING
R - JOHN DEERE TRACTOR WORKS



THE ENGINE SERIAL NUMBER PLATE IS LOCATED ON THE RIGHT-HAND SIDE OF THE ENGINE.

SHORT BLOCK SERIAL NUMBER PLATE
(S.B.S.N. -RGSB404882600)



RGP2856

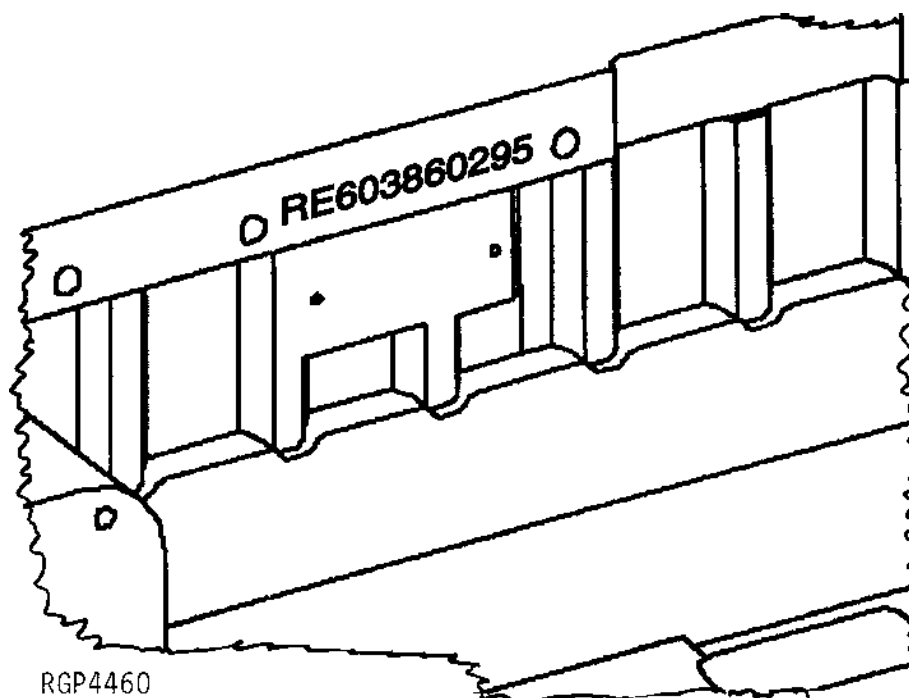
A SHORT BLOCK SERIAL NUMBER PLATE PLUS 2-37H44 DRIVE SCREWS ARE USED TO ATTACH TO REPLACEMENT SHORT BLOCK ASSEMBLIES. THIS NUMBER WILL BE REFERRED TO WHEN NEW PARTS AFFECT THE SHORT BLOCK ASSEMBLY. THE PREVIOUS ENGINE SERIAL NUMBER SHOULD BE STAMPED INTO THE BLANK SPACE PROVIDED, AS A REFERENCE FOR YOUR DEALER.

1. DESIGNATES ENGINE MANUFACTURER
2. DESIGNATES REPLACEMENT SHORT BLOCK
3. DESIGNATES CUBIC INCH
4. DESIGNATES THE PRODUCTION DATE
5. DESIGNATES COMPONENT SEQUENCE

RG - WATERLOO ENGINE WORKS
SB
XXX- 404
1234
56

(RE603860295-)

SHORT BLOCK SERIAL NUMBER IDENTIFICATION



SERIAL NUMBER STAMPED INTO CASTING OF BLOCK NEAR PREVIOUS SERIAL NUMBER PLATE.

EXAMPLE: RE603860295

- | | |
|-----------------------------------|---------|
| 1. DESIGNATES SERVICE PART NUMBER | RE60386 |
| 2. DESIGNATES MONTH ASSEMBLED | 02 |
| 3. DESIGNATES YEAR ASSEMBLED | 95 |

SERIAL NUMBER LISTING INFORMATION

SERIAL NUMBER INFORMATION IS LISTED TO SHOW ON WHICH MACHINES EACH PART CAN BE USED; FOR EXAMPLE:

- THE PART CAN BE USED ON ALL MACHINES.
- 000000- THE PART CAN BE USED ON ALL MACHINES BEGINNING WITH THE SERIAL NUMBER LISTED.
- 000000 THE PART CAN BE USED ON ALL MACHINES UP TO AND INCLUDING THE SERIAL NUMBER LISTED.
- 000000-000000 THE PART CAN BE USED ON ALL MACHINES BETWEEN AND INCLUDING THE SERIAL NUMBERS LISTED.

- 15BV1- WHEN A MODEL NUMBER BEGINS WITH 15BV, 14HA, 15PP, 25SC, 2RC, 4RC, 15RS, 3CY, 2SP, OR 31SV, IT REFERS TO THE MODEL NUMBER OF THE BRAKE VALVE, HYDRAULIC ACCUMULATOR, HYDRAULIC PUMP, REMOTE CYLINDER SELECTIVE CONTROL VALVE FOR NO ROCKSHAFT, REMOTE CYLINDER SELECTIVE CONTROL VALVES, REMOTE CYLINDERS, REMOTE CYLINDERS WITH MECHANICAL STOPS, ROCKSHAFT CONTROL VALVE, STEERING CYLINDER, STEERING METERING PUMP, OR STEERING VALVE.

WHEN XXXXXX'S ARE LISTED IN PLACE OF A SERIAL NUMBER, A SERIAL NUMBER CHANGE WAS MADE BUT THE EXACT SERIAL NUMBER WAS NOT AVAILABLE WHEN THE CATALOG WAS PRODUCED.

MODEL NUMBERS

THE FOLLOWING COMPONENTS HAVE MODEL NUMBERS:

BRAKE VALVE. 15BV1
HYDRAULIC ACCUMULATOR. 14HA2
HYDRAULIC PUMP (66CM3 (4 IN3)) 15PP1
REMOTE CYLINDER SELECTIVE CONTROL VALVE FOR NO ROCKSHAFT - DUAL OR TRIPLE. 25SC1
REMOTE CYLINDER SELECTIVE CONTROL VALVE FOR ROCKSHAFT - DUAL OR TRIPLE 23SC2
REMOTE CYLINDER (89 X 203MM (3-1/2" X 8")) 2RC4
REMOTE CYLINDER WITH MECHANICAL STOP (89 X 203MM (3-1/2" X 8")). 4RC3
ROCKSHAFT CONTROL VALVE. 15RS1
STEERING CYLINDER. 3CY1
STEERING METERING PUMP 2SP1
STEERING VALVE 31SV1

EACH OF THE ABOVE COMPONENTS HAS A MODEL NUMBER. WHEN THE DESIGN OF ONE OF THESE COMPONENTS IS CHANGED, THE MODEL NUMBER FOR THE NEWLY DESIGNED COMPONENT IS CHANGED.

DIRECTION ARROW

ARROWS ARE USED WITH ILLUSTRATIONS TO INDICATE THE FRONT OF THE UNIT. "RIGHT-HAND" AND "LEFT-HAND" SIDES ARE DETERMINED BY FACING IN THE DIRECTION OF MACHINE FORWARD TRAVEL.

BOX-ENCLOSED ILLUSTRATIONS

A KEY NUMBER, SHOWN IN THE PARTS LIST, IS ASSIGNED TO A BOX ENCLOSING ALL PARTS SOLD AS A SERVICE ASSEMBLY.

BOLT AND CAP SCREW STRENGTH IDENTIFICATION

U.S. CUSTOMARY DIMENSIONED PRODUCT: BOLTS AND CAP SCREWS REQUIRED TO HAVE HIGH-STRENGTH QUALITIES EQUIVALENT TO SAE GRADE 8 ARE IDENTIFIED THROUGHOUT THIS CATALOG BY THE DESCRIPTION HS SAE 8. ALL STANDARD BOLTS AND CAP SCREWS ARE SAE GRADE 5 OR LOWER.

METRIC DIMENSIONED PRODUCT: BOLTS AND CAP SCREWS REQUIRED TO HAVE HIGH-STRENGTH QUALITIES EQUIVALENT TO PROPERTY CLASS 10.9 ARE IDENTIFIED THROUGHOUT THIS CATALOG BY THE DESCRIPTION HS 10.9. ALL STANDARD BOLTS AND CAP SCREWS ARE PROPERTY CLASS 8.8 OR LOWER.

JDM REMANUFACTURED COMPONENTS

THE SERVICE PARTS LISTED IN THIS CATALOG ARE INTENDED FOR THE REPAIR OF ORIGINAL EQUIPMENT COMPONENTS. ALTHOUGH MOST SERVICE PARTS MAY BE USED TO REPAIR REMANUFACTURED COMPONENTS, THE REMANUFACTURING PROCESS MAY CHANGE PARTS SUFFICIENTLY SO THAT SERVICE PARTS ARE INADEQUATE OR NOT USABLE.

TRADEMARKS

THROUGHOUT THIS PARTS CATALOG, YOU WILL FIND THE FOLLOWING TRADEMARKS:

HYDRACUSHIONED™
PERSONAL-POSTURE™
QUAD-RANGE™
PERFORMANCE TRAK™ II

ROLL-GARD®
SOUND-GARD®
TORQ-GARD PLUS 50®
HY-GARD®
QUIK-TATCH®
LOCTITE®

QUANTITY COLUMN OR REMARKS COLUMN

GENERALLY THE QUANTITY SHOWN IS FOR THE ENTIRE TRACTOR AT ANY GIVEN LOCATION. THERE ARE EXCEPTIONS AS IN WHEEL HARDWARE WHERE ONLY ENOUGH IS SHOWN FOR ONE WHEEL.

THE FOLLOWING ABBREVIATIONS ARE USED IN THE REMARKS COLUMN:

NLR - NO LONGER REQUIRED

NA - NOT APPLICABLE

NLA - NO LONGER AVAILABLE

FI - FIELD INSTALLED

FI IS AN OPTION THAT MUST BE ORDERED DIRECT FROM THE PRODUCING FACTORY.

SECTION INDEX

GENERAL INFORMATION	10
ENGINE.	20
FUEL AND AIR.	30
ELECTRICAL	40
POWER TRAIN	50
STEERING AND BRAKES	60
HYDRAULICS.	70
WHEELS, FRONT AXLES, SHEET METAL.	80
OPERATOR'S STATION.	90
NUMERICAL INDEX	95