



*JOHN DEERE 4640 OR 4840 TRACTOR
(MANUFACTURED 1978-1982)*

(SPECIFICATIONS AND DESIGN SUBJECT TO CHANGE WITHOUT NOTICE)

SERIAL NUMBERS

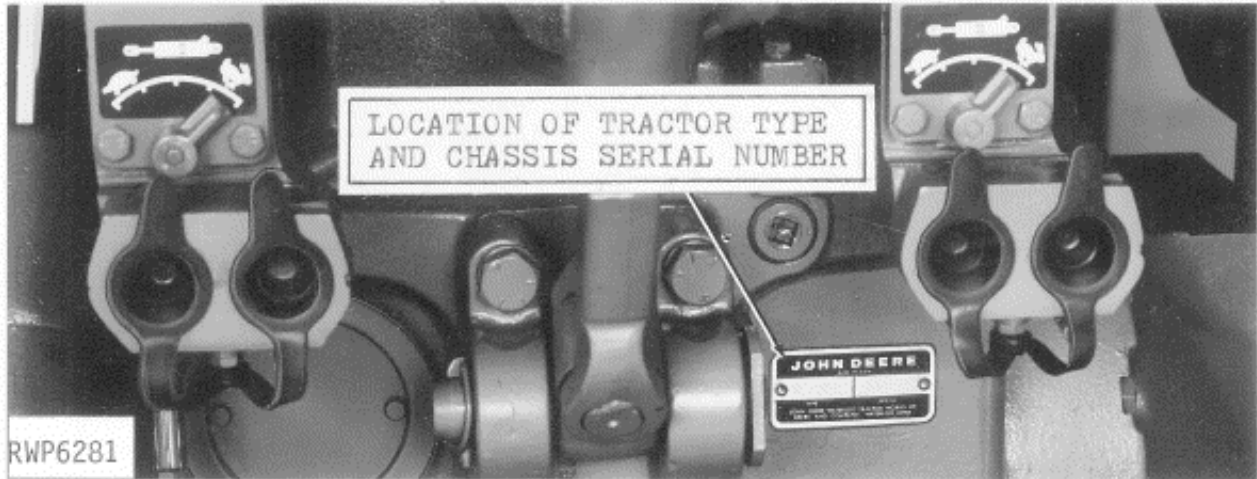
EACH 4640 OR 4840 TRACTOR HAS THE FOLLOWING SERIAL NUMBER PLATES: BASIC TRACTOR, ENGINE, TRANSMISSION, HYDRAULIC PUMP, AND ROLL-GARD OR SOUND-GARD BODY.

BASIC TRACTOR SERIAL NUMBER (PRODUCT IDENTIFICATION NUMBER)

RWP1942 1
 4640 2
 P 3
 001000 4
 R

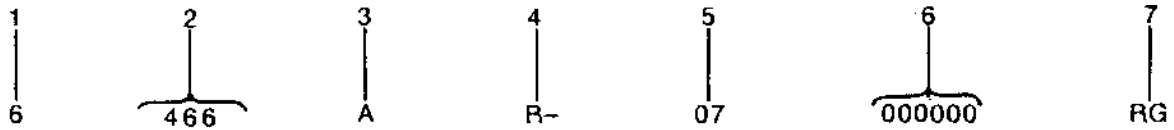
1. DESIGNATES TRACTOR MODEL
2. DESIGNATES TRANSMISSION TYPE
3. DESIGNATES TRACTOR SERIAL NUMBER
4. DESIGNATES TRACTOR MANUFACTURER

4640 OR 4840
H - QUAD-RANGE
P - POWER SHIFT
R - JOHN DEERE TRACTOR WORKS



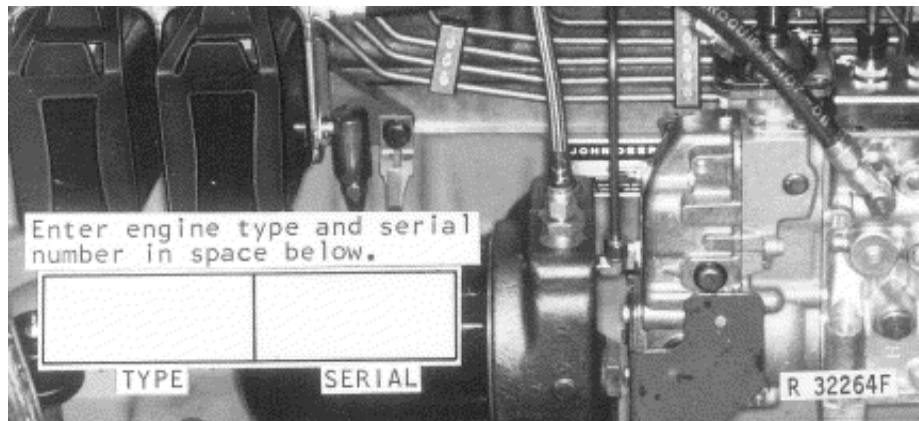
THE BASIC TRACTOR SERIAL NUMBER PLATE IS LOCATED AT THE REAR OF THE TRANSMISSION CASE.

ENGINE SERIAL NUMBER



RWP1943

- | | |
|---|---|
| 1. DESIGNATES NUMBER OF CYLINDERS | 06 |
| 2. DESIGNATES CUBIC INCH DISPLACEMENT | 466 |
| 3. DESIGNATES TYPE OF AIR INTAKE SYSTEM | A - TURBOCHARGED AND INTERCOOLED DIESEL |
| 4. DESIGNATES FACTORY USER | R - JOHN DEERE TRACTOR WORKS |
| 5. DESIGNATES VERSION | 07 - SEVENTH (4640) |
| | 05 - FIFTH (4840) |
| 6. DESIGNATES ENGINE SERIAL NUMBER | |
| 7. DESIGNATES ENGINE MANUFACTURER | RG - JOHN DEERE ENGINE WORKS |



THE ENGINE SERIAL NUMBER PLATE IS LOCATED ON THE RIGHT-HAND SIDE OF THE ENGINE BEHIND THE INJECTION PUMP.

**TWO LINE BAR CODED ENGINE SERIAL NUMBER PLATE
(LOCATED ON FUEL INJECTION PUMP SIDE OF ENGINE)**



RGP3513

FIRST LINE

DESIGNATES ENGINE MANUFACTURER	RG - WATERLOO ENGINE WORKS
DESIGNATES NUMBER OF CYLINDERS	6
DESIGNATES CUBIC INCH DISPLACEMENT	466
DESIGNATES TYPE OF AIR INTAKE SYSTEM	A - TURBOCHARGED AND INTERCOOLED T - TURBOCHARGED D - NATURALLY ASPIRATED
DESIGNATES ENGINE SERIAL NUMBER	XXXXXX

SECOND LINE

6466AR-04, 05, 11, 12	4840
6466AR-07, 08, 09, 10	4640

SHORT BLOCK SERIAL NUMBER PLATE

(-RGSB466882500)



RGP3513

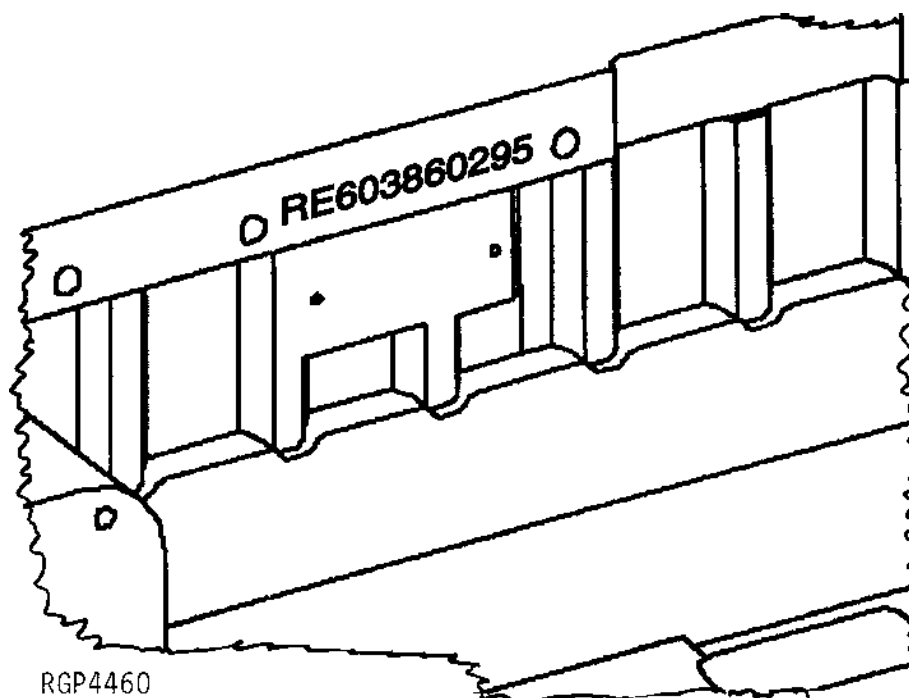
A SHORT BLOCK SERIAL NUMBER PLATE PLUS 2-37H44 DRIVE SCREWS ARE USED TO ATTACH TO REPLACEMENT SHORT BLOCK ASSEMBLIES. THIS NUMBER WILL BE REFERRED TO WHEN NEW PARTS AFFECT THE SHORT BLOCK ASSEMBLY. THE PREVIOUS ENGINE SERIAL NUMBER SHOULD BE STAMPED INTO THE BLANK SPACE PROVIDED, AS A REFERENCE FOR YOUR DEALER.

1. DESIGNATES ENGINE MANUFACTURER
2. DESIGNATES REPLACEMENT SHORT BLOCK
3. DESIGNATES CUBIC INCH
4. DESIGNATES THE PRODUCTION DATE
5. DESIGNATES COMPONENT SEQUENCE

RG - WATERLOO ENGINE WORKS
SB
XXX- 466
1234
56

(RE603860295-)

SHORT BLOCK SERIAL NUMBER IDENTIFICATION

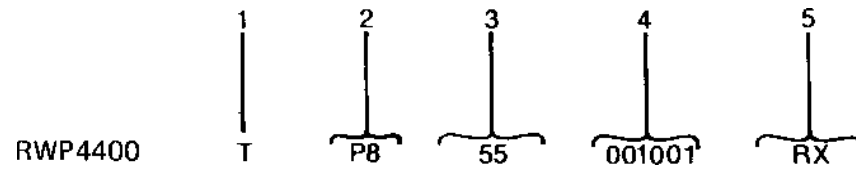


SERIAL NUMBER STAMPED INTO CASTING OF BLOCK NEAR PREVIOUS SERIAL NUMBER PLATE.

EXAMPLE: RE603860295

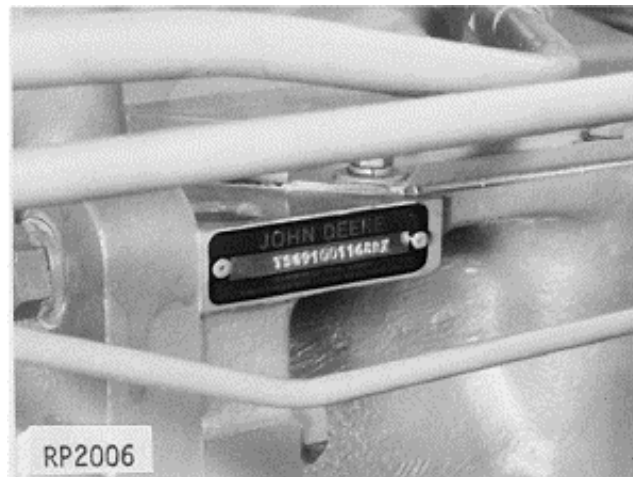
- | | |
|-----------------------------------|---------|
| 1. DESIGNATES SERVICE PART NUMBER | RE60386 |
| 2. DESIGNATES MONTH ASSEMBLED | 02 |
| 3. DESIGNATES YEAR ASSEMBLED | 95 |

TRANSMISSION SERIAL NUMBER



1. DESIGNATES TYPE
2. DESIGNATES TRANSMISSION TYPE
3. DESIGNATES INPUT TORQUE (ROUNDED TO NEAREST 10 NEWTON METERS)
4. DESIGNATES TRANSMISSION SERIAL NUMBER
5. DESIGNATES TRANSMISSION MANUFACTURER

T - TRANSMISSION
P8- POWER SHIFT
SG- QUAD-RANGE
01-99 - 10-990 NM (7-731 LB-FT)
RX - JOHN DEERE COMPONENT WORKS



THE TRANSMISSION SERIAL NUMBER PLATE IS LOCATED ON THE LEFT-HAND SIDE OF THE TRANSMISSION.

SOUND-GARD BODY OR ROLL-GARD SERIAL NUMBER

RWP4192 1
 SG 2
 5 3
 001000 4
 RW

1. DESIGNATES TYPE

SG - SOUND-GARD BODY

2. DESIGNATES VERSION

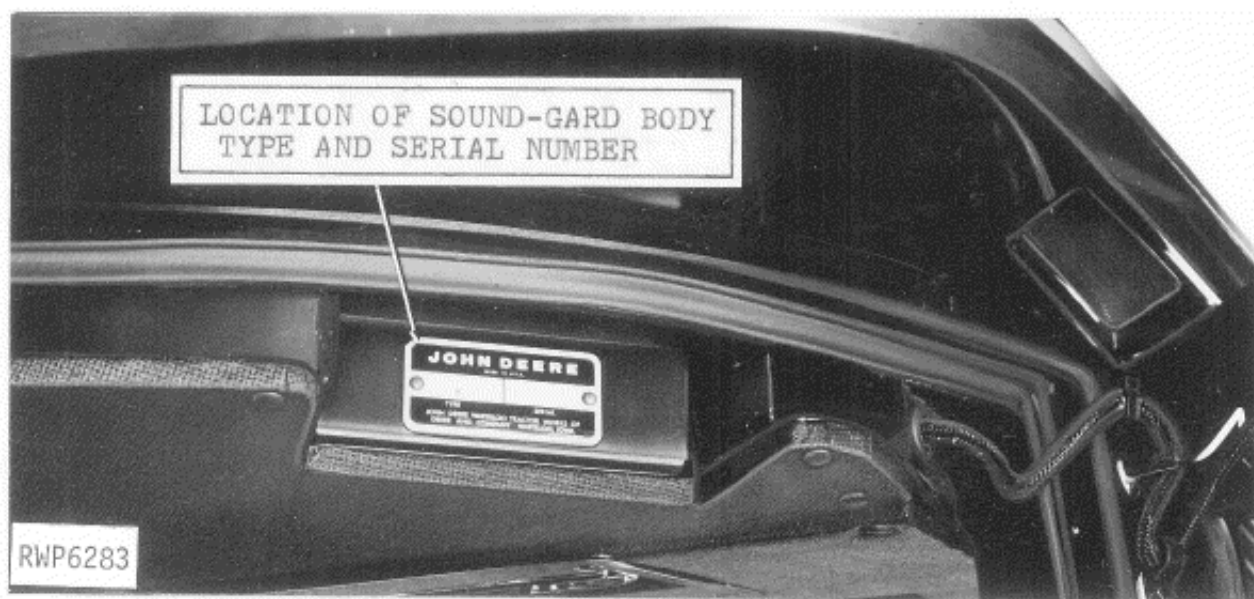
RG - ROLL-GARD

3. DESIGNATES SERIAL NUMBER

5 - FIFTH (4640 OR 4840)

4. DESIGNATES SOUND-GARD BODY MANUFACTURER

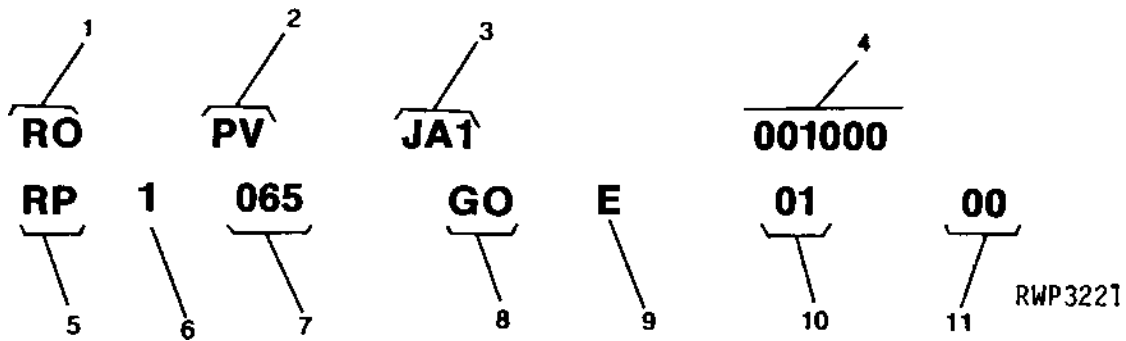
RW - JOHN DEERE TRACTOR WORKS



THE SOUND-GARD BODY SERIAL NUMBER PLATE IS LOCATED ON THE WINDSHIELD WIPER MOTOR ACCESS DOOR HEADER.

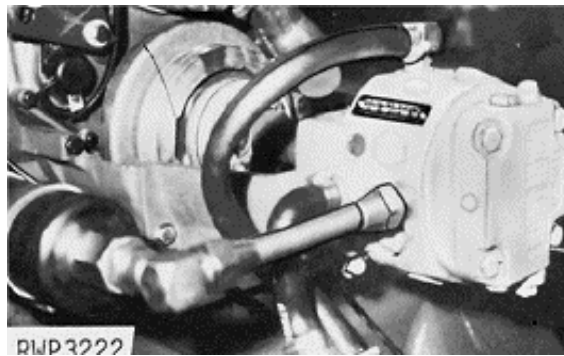
THE ROLL-GARD SERIAL NUMBER IS STAMPED ON A PLATE LOCATED ON THE RIGHT-HAND FRONT POST.

HYDRAULIC PUMP SERIAL NUMBER



1. DESIGNATES MANUFACTURING FACTORY
2. DESIGNATES COMPONENT
3. DESIGNATES MODEL NUMBER
4. DESIGNATES COMPONENT NUMERIC NUMBER
5. DESIGNATES TYPE COMPONENT
6. DESIGNATES FAMILY
7. DESIGNATES SIZE
8. DESIGNATES PORT ARRANGEMENT
9. DESIGNATES
10. DESIGNATES STROKE CONTROL VALVE TYPE
11. NO SIGNIFICANCE

- RO - JOHN DEERE COMPONENT WORKS
- PV - PUMP VARIABLE
- JA1 - 66 CM3 (4 IN3)
- RP - RADIAL PISTON PUMP
- 1 - FRAME SIZE
- 65 - 66 CM3 (1RW)
- GO - PRIMARY HOUSING
- E - EITHER
- 01 - STROKE CONTROL VALVE CODE
- 00 - NO SIGNIFICANCE



THE HYDRAULIC PUMP SERIAL NUMBER PLATE IS LOCATED ON THE TOP RIGHT-HAND SIDE OF THE PUMP.

SERIAL NUMBER LISTING INFORMATION

SERIAL NUMBER INFORMATION IS LISTED TO SHOW ON WHICH MACHINES EACH PART CAN BE USED; FOR EXAMPLE:

- THE PART CAN BE USED ON ALL MACHINES.
- 000000- THE PART CAN BE USED ON ALL MACHINES BEGINNING WITH THE SERIAL NUMBER LISTED.
- 000000 THE PART CAN BE USED ON ALL MACHINES UP TO AND INCLUDING THE SERIAL NUMBER LISTED.
- 000000-000000 THE PART CAN BE USED ON ALL MACHINES BETWEEN AND INCLUDING THE SERIAL NUMBERS LISTED.

- 15BV1- WHEN A MODEL NUMBER BEGINS WITH 15BV, 14HA, 15PP, 25SC, 2RC, 4RC, 15RS, 3CY, 2SP, OR 31SV, IT REFERS TO THE MODEL NUMBER OF THE BRAKE VALVE, HYDRAULIC ACCUMULATOR, HYDRAULIC PUMP, REMOTE CYLINDER SELECTIVE CONTROL VALVE FOR NO ROCKSHAFT, REMOTE CYLINDER SELECTIVE CONTROL VALVES, REMOTE CYLINDERS, REMOTE CYLINDERS WITH MECHANICAL STOPS, ROCKSHAFT CONTROL VALVE, STEERING CYLINDER, STEERING METERING PUMP, OR STEERING VALVE.

WHEN XXXXXX'S ARE LISTED IN PLACE OF A SERIAL NUMBER, A SERIAL NUMBER CHANGE WAS MADE BUT THE EXACT SERIAL NUMBER WAS NOT AVAILABLE WHEN THE CATALOG WAS PRODUCED.

MODEL NUMBERS

THE FOLLOWING COMPONENTS HAVE MODEL NUMBERS:

BRAKE VALVE. 15BV1
HYDRAULIC ACCUMULATOR. 14HA2
HYDRAULIC PUMP (66CM3 (4 IN3)) 15PP1
REMOTE CYLINDER SELECTIVE CONTROL VALVE FOR NO ROCKSHAFT - DUAL OR TRIPLE. 25SC1
REMOTE CYLINDER SELECTIVE CONTROL VALVE FOR ROCKSHAFT - DUAL OR TRIPLE 23SC2
REMOTE CYLINDER (89 X 203MM (3-1/2" X 8")) 2RC4
REMOTE CYLINDER WITH MECHANICAL STOP (89 X 203MM (3-1/2" X 8")). 4RC3
ROCKSHAFT CONTROL VALVE. 15RS1
STEERING CYLINDER. 3CY1
STEERING METERING PUMP 2SP1
STEERING VALVE 31SV1

EACH OF THE ABOVE COMPONENTS HAS A MODEL NUMBER. WHEN THE DESIGN OF ONE OF THESE COMPONENTS IS CHANGED, THE MODEL NUMBER FOR THE NEWLY DESIGNED COMPONENT IS CHANGED.

DIRECTION ARROW

ARROWS ARE USED WITH ILLUSTRATIONS TO INDICATE THE FRONT OF THE UNIT. "RIGHT-HAND" AND "LEFT-HAND" SIDES ARE DETERMINED BY FACING IN THE DIRECTION OF MACHINE FORWARD TRAVEL.

BOX-ENCLOSED ILLUSTRATIONS

A KEY NUMBER, SHOWN IN THE PARTS LIST, IS ASSIGNED TO A BOX ENCLOSING ALL PARTS SOLD AS A SERVICE ASSEMBLY.

BOLT AND CAP SCREW STRENGTH IDENTIFICATION

U.S. CUSTOMARY DIMENSIONED PRODUCT: BOLTS AND CAP SCREWS REQUIRED TO HAVE HIGH-STRENGTH QUALITIES EQUIVALENT TO SAE GRADE 8 ARE IDENTIFIED THROUGHOUT THIS CATALOG BY THE DESCRIPTION HS SAE 8. ALL STANDARD BOLTS AND CAP SCREWS ARE SAE GRADE 5 OR LOWER.

METRIC DIMENSIONED PRODUCT: BOLTS AND CAP SCREWS REQUIRED TO HAVE HIGH-STRENGTH QUALITIES EQUIVALENT TO PROPERTY CLASS 10.9 ARE IDENTIFIED THROUGHOUT THIS CATALOG BY THE DESCRIPTION HS 10.9. ALL STANDARD BOLTS AND CAP SCREWS ARE PROPERTY CLASS 8.8 OR LOWER.

JDM REMANUFACTURED COMPONENTS

THE SERVICE PARTS LISTED IN THIS CATALOG ARE INTENDED FOR THE REPAIR OF ORIGINAL EQUIPMENT COMPONENTS. ALTHOUGH MOST SERVICE PARTS MAY BE USED TO REPAIR REMANUFACTURED COMPONENTS, THE REMANUFACTURING PROCESS MAY CHANGE PARTS SUFFICIENTLY SO THAT SERVICE ARE INADEQUATE OR NOT USABLE.

TRADEMARKS

THROUGHOUT THIS PARTS CATALOG, YOU WILL FIND THE FOLLOWING DEERE AND COMPANY TRADEMARKS:

PERSONAL - POSTURE™
PERFORMANCE TRAK™ I
PERFORMANCE TRAK™ II
QUAD - RANGE™
INVESTIGATOR™ III

QUIK - TATCH®
ROLL - GARD®
SOUND - GARD®
TORQ - GARD SUPREME®
HY - GARD®

QUANTITY COLUMN OR REMARKS COLUMN

GENERALLY THE QUANTITY SHOWN IS FOR THE ENTIRE TRACTOR AT ANY GIVEN LOCATION. THERE ARE EXCEPTIONS AS IN WHEEL HARDWARE WHERE ONLY ENOUGH IS SHOWN FOR ONE WHEEL.

THE FOLLOWING ABBREVIATIONS ARE USED IN THE REMARKS COLUMN:

NLR - NO LONGER REQUIRED

NA - NOT APPLICABLE

NLA - NO LONGER AVAILABLE

FI - FIELD INSTALLED

FI IS AN OPTION THAT MUST BE ORDERED DIRECT FROM THE PRODUCING FACTORY.

SERIAL NUMBER CODES

THE FOLLOWING CODES ARE USED TO DESIGNATE SERIAL NUMBER TYPES IN GROUP HEADINGS AND FOOTNOTES BECAUSE OF LIMITED SPACE. THEY WILL BE USED ONLY WHEN THE TYPE IS DIFFERENT THAN THE SERIAL COLUMN HEADING SHOWN ON THE PAGE.

RG--ROLL-GARD

SGB--SOUND-GARD BODY

CSN--CAB SERIAL NUMBER

ESN--ENGINE SERIAL NUMBER

ASN--AXLE SERIAL NUMBER

PSN--HYDRAULIC PUMP SERIAL NUMBER

TSN--TRACTOR SERIAL NUMBER

PQT--POWRQUAD TRANSMISSION SERIAL NUMBER

PST--POWER SHIFT TRANSMISSION SERIAL NUMBER

QRT--QUADRANGE TRANSMISSION SERIAL NUMBER

SPT--SYNCRPLUS TRANSMISSION SERIAL NUMBER

SRT--SYNCR-RANGE TRANSMISSION SERIAL NUMBER

DSN--DIFFERENTIAL SERIAL NUMBER

CODES USED IN "REMARKS" COLUMN

	ENGLISH
ALSO ORDER	ALSO ORDER
AMP	AMPERE
AND	AND
APPL	THIS APPLICATION ONLY
AR	AS REQUIRED
ASSY	COMPLETE ASSEMBLY
COMPLETE	COMPLETE
FRONT	FRONT
HP	HORSEPOWER
ID	INSIDE DIAMETER
INCL KEYS	INCLUDES KEYS
KIT	KIT
LH	LEFT-HAND
LOW	LOWER
MARKED	MARKED
MF	MAKE FROM
MFWD	MECHANICAL FRONT WHEEL DRIVE
NA	NOT USED THIS APPLICATION
NLA	NO LONGER AVAILABLE
NSEP	NOT SUPPLIED SEPARATELY
OD	OUTSIDE DIAMETER
OR	OR
ORD	ORDER
OS	OVERSIZE
PKG	PACKAGE
REAR	REAR
RH	RIGHT-HAND
STD	STANDARD
SUB	REPLACED BY
SUB FOR	SUBSTITUTES FOR
TK	THICKNESS
UP	UPPER
US	UNDERSIZE
USE WITH	USE WITH
W /	WITH
W/O	WITHOUT
Z	GEAR AND SPROCKET TEETH NUMBER

RXP020961

SECTION INDEX

GENERAL INFORMATION	10
ENGINE.	20
FUEL AND AIR.	30
ELECTRICAL	40
POWER TRAIN	50
STEERING AND BRAKES	60
HYDRAULICS.	70
WHEELS, FRONT AXLES, SHEET METAL.	80
OPERATOR'S STATION.	90
NUMERICAL INDEX	95