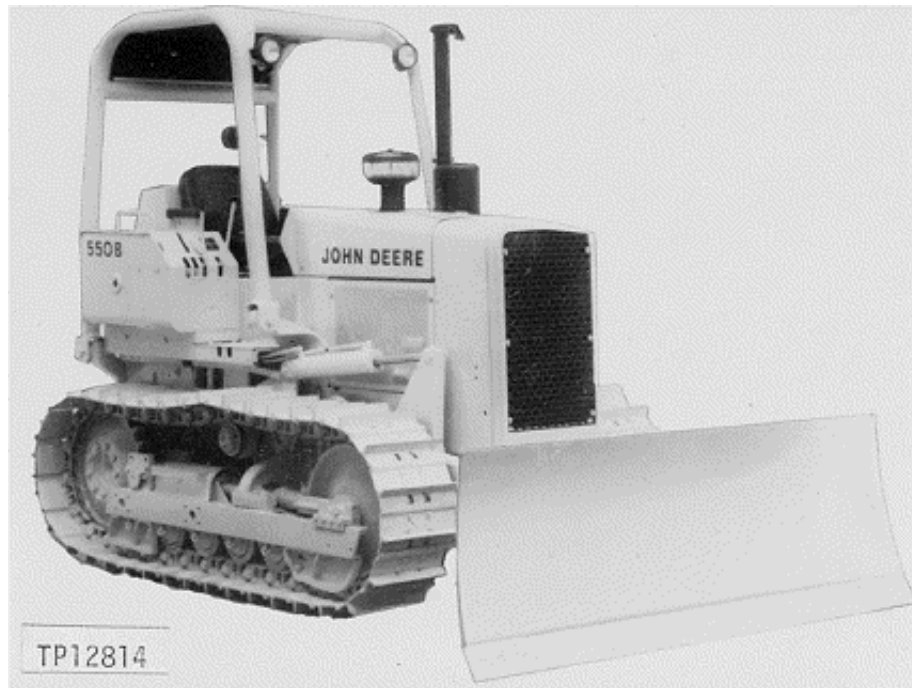


INTRODUCTION AND CUSTOMER INFORMATION



*RIGHT-HAND SIDE VIEW OF JOHN DEERE 550B CRAWLER BULLDOZER
(MANUFACTURED 1985-1988)*

TO THE CUSTOMER

THE PART NUMBERS IN THIS PARTS CATALOG WERE CORRECT AT THE TIME YOUR CATALOG WAS PUBLISHED. IT IS OUR POLICY TO CONSTANTLY IMPROVE OUR MACHINES AND, THEREFORE, PART NUMBERS MAY CHANGE. WHEN ORDERING PARTS, VERIFY PART NUMBERS THROUGH YOUR DEALER'S MICROFICHE WHICH IS UP-TO-DATE.

(SPECIFICATIONS AND DESIGN SUBJECT TO CHANGE WITHOUT NOTICE.)

SERIAL NUMBER LOCATION

EACH 550B CRAWLER BULLDOZER HAS THREE SERIAL NUMBER PLATES: ONE FOR THE PRODUCT IDENTIFICATION NUMBER, ONE FOR THE ENGINE AND ONE FOR THE TRANSMISSION.

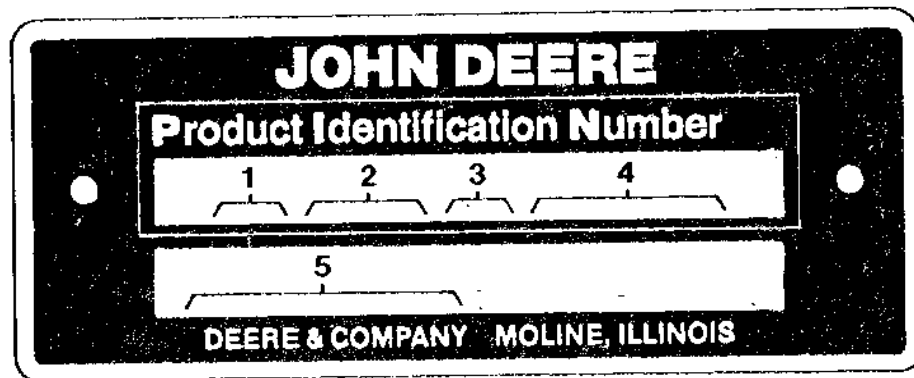
THE PRODUCT IDENTIFICATION NUMBER PLATE IS LOCATED ON THE BATTERY BOX FRONT PLATE.

THE ENGINE SERIAL NUMBER PLATE IS LOCATED BELOW THE FUEL PUMP ON THE RIGHT SIDE OF THE CYLINDER BLOCK.

THE TRANSMISSION SERIAL NUMBER PLATE IS LOCATED ON THE LEFT-HAND SIDE OF THE TRANSMISSION NEAR THE FRONT OF THE CASE.

LEFT SIDE AND RIGHT SIDE, FRONT AND REAR OF THE CRAWLER BULLDOZER ARE VIEWED BY FACING IN THE DIRECTION OF THE CRAWLER BULLDOZER FORWARD TRAVEL.

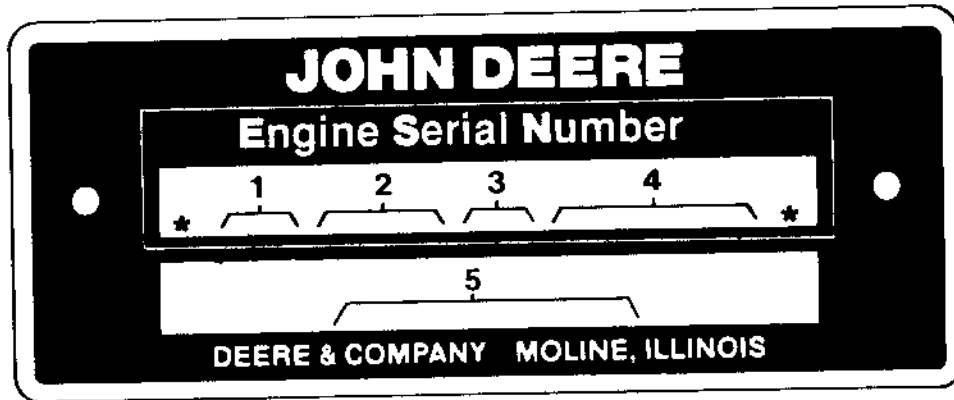
PRODUCT IDENTIFICATION NUMBER



TP16004

- | | |
|---|-------------------------------|
| 1. DESIGNATES CRAWLER BULLDOZER MANUFACTURER | TO - JOHN DEERE DUBUQUE WORKS |
| 2. DESIGNATES CRAWLER BULLDOZER MODEL | 550B |
| 3. DESIGNATES CRAWLER BULLDOZER CONFIGURATION | A - WITH 6405 DOZER |
| 4. DESIGNATES CRAWLER BULLDOZER SERIAL NUMBER | 123456 |
| 5. DESIGNATES UNIT TYPE | CRAWLER BULLDOZER |

ENGINE SERIAL NUMBER



- | | |
|--|----------------------------|
| 1. DESIGNATES ENGINE MANUFACTURER | T-JOHN DEERE DUBUQUE WORKS |
| 2. DESIGNATES NUMBER OF CYLINDERS AND CUBIC INCH DISPLACEMENT. | 4276 (4523 CM3) |
| 3. DESIGNATES FUEL TYPE OR SPECIAL CONDITION | T |
| 4. DESIGNATES ENGINE SERIAL NUMBER | 123456 |
| 5. DESIGNATES THE ENGINE APPLICATION AND FACTORY USER. | 4276TT 06 |

BASIC BACKHOE SERIAL NUMBER

¹
²
³
⁴
 9300 - 000000 T
T23678

- | | |
|--|------------------------------|
| 1. DIGITS 1 THROUGH 4 DESIGNATE THE BACKHOE MODEL. | 9300 - 9300 BACKHOE |
| 2. DIGIT 5 IS USED FOR SEPARATION. | |
| 3. DIGITS 6 THROUGH 11 DESIGNATE THE PORTION OF THE BACKHOE SERIAL NUMBER SHOWN IN THE SERIAL NUMBER COLUMN OF THIS CATALOG. | |
| 4. DIGIT 12 DESIGNATES THE MANUFACTURER OF THE BACKHOE. | T - JOHN DEERE DUBUQUE WORKS |

CRAWLER LOADER BULLDOZER

THE 550B CRAWLER BULLDOZER MAY BE EQUIPPED WITH A 3110 RIPPER, 3600 LOG ARCH, A 9300 BACKHOE OR A 9550 BACKHOE.

FOR 3110 RIPPER SERVICE PARTS SEE PC-931, FOR 3600 LOG ARCH SERVICE PARTS SEE PC-591, FOR 9300 BACKHOE SERVICE PARTS SEE PC-1235 AND FOR 9550 SERVICE PARTS SEE PC-1661.

SERIAL NUMBER LISTING INFORMATION

SERIAL NUMBER INFORMATION IS LISTED TO SHOW ON WHICH MACHINES EACH PART CAN BE USED; FOR EXAMPLE:

- THE PART CAN BE USED ON ALL MACHINES.
- 000000- THE PART CAN BE USED ON ALL MACHINES BEGINNING WITH THE SERIAL NUMBER LISTED.
- 000000 THE PART CAN BE USED ON ALL MACHINES UP TO AND INCLUDING THE SERIAL NUMBER LISTED.
- 000000-000000 THE PART CAN BE USED ON ALL MACHINES BETWEEN AND INCLUDING THE SERIAL NUMBERS LISTED.

WHEN XXXXXX'S ARE LISTED IN PLACE OF A SERIAL NUMBER, A SERIAL NUMBER CHANGE WAS MADE BUT THE EXACT SERIAL NUMBER WAS NOT AVAILABLE WHEN THE CATALOG WAS PRODUCED.

DIRECTION ARROW

ARROWS ARE USED WITH ILLUSTRATIONS TO INDICATE THE FRONT OF THE UNIT. "RIGHT-HAND" AND "LEFT-HAND" SIDES OF LOADER OR TRACTOR PARTS ARE DETERMINED BY FACING IN THE DIRECTION OF MACHINE FORWARD TRAVEL.

EXCEPTION: FOR ALL BACKHOE PARTS, "RIGHT-HAND" AND "LEFT-HAND" SIDES, "FRONT" AND "REAR" ARE DETERMINED WHEN SEATED FOR BACKHOE OPERATION.

BOX-ENCLOSED ILLUSTRATIONS

A KEY NUMBER, SHOWN IN THE PARTS LIST, IS ASSIGNED TO A BOX ENCLOSING ALL PARTS SOLD AS A SERVICE ASSEMBLY.

BOLT AND CAP SCREW STRENGTH IDENTIFICATION

BOLTS AND CAP SCREWS REQUIRED TO HAVE HIGH-STRENGTH QUALITIES EQUIVALENT TO SAE GRADE 8 ARE IDENTIFIED THROUGHOUT THIS CATALOG BY THE DESCRIPTION HS SAE 8. ALL STANDARD BOLTS AND CAP SCREWS ARE SAE GRADE 5 OR LOWER.

COMPLETE GOODS LISTINGS

COMPLETE GOODS ARE LISTED IN BOLD FACE TYPE. ORDER SEPARATELY. DO NOT INCLUDE ON REPLACEMENT PARTS ORDER.

SI UNITS OF MEASURE

METRIC DIMENSIONS ARE GIVEN, WHERE APPLICABLE, THROUGHOUT THIS PARTS CATALOG.

CHANGE INDICATOR LINE

CHANGES AFFECTING THE ORDERING OF PARTS ARE IDENTIFIED BY VERTICAL LINES MARKED IN THE LEFT-HAND MARGIN OF REVISED PARTS LISTING IMAGES. A LINE IS ALSO AT THE LEFT-HAND EDGE OF THE SAME PART NUMBER IN THE NUMERICAL INDEX TO SHOW THE LOCATION OF REVISED INFORMATION.

TRADEMARKS

THROUGHOUT THIS PARTS CATALOG, YOU WILL FIND THE MANUFACTURER'S TRADEMARKS. THE FOLLOWING IS A LIST OF TRADEMARKS THAT ARE USED IN THIS PUBLICATION.

LOCTITE® IS A TRADEMARK OF LOCTITE CORPORATION.