

## INTRODUCTION AND CUSTOMER INFORMATION



*LEFT-HAND SIDE VIEW OF JOHN DEERE JD500 SERIES-A LOADER BACKHOE WITH MODEL 97 BACKHOE  
MANUFACTURED (1967-1968)*

*(SPECIFICATIONS AND DESIGN SUBJECT TO CHANGE WITHOUT NOTICE.)*

## INTRODUCTION AND CUSTOMER INFORMATION



*RIGHT-HAND SIDE VIEW OF JOHN DEERE JD500 SERIES-A LOADER BACKHOE WITH MODEL 9700 BACKHOE  
MANUFACTURED (1968-1971)*

### **TO THE CUSTOMER**

THE PART NUMBERS IN THIS PARTS CATALOG WERE CORRECT AT THE TIME YOUR CATALOG WAS PUBLISHED. IT IS OUR POLICY TO CONSTANTLY IMPROVE OUR MACHINES AND, THEREFORE, PART NUMBERS MAY CHANGE. WHEN ORDERING PARTS, VERIFY PART NUMBERS THROUGH YOUR DEALER'S MICROFICHE WHICH IS UP-TO-DATE.

*(SPECIFICATIONS AND DESIGN SUBJECT TO CHANGE WITHOUT NOTICE)*

## SERIAL NUMBER LOCATION

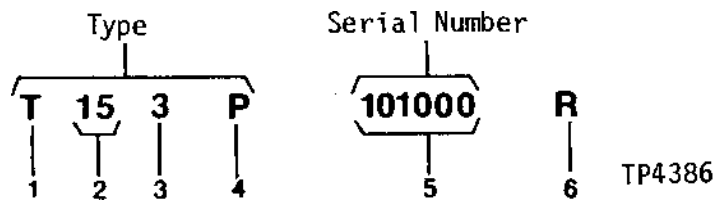
EACH JD500 SERIES-A LOADER BACKHOE MAY HAVE FIVE SERIAL NUMBER PLATES: ONE FOR THE CHASSIS, ONE FOR THE ENGINE, ONE FOR THE LOADER, ONE FOR THE REPLACEMENT HYDRAULIC PUMP, AND ONE FOR THE BACKHOE. IN ADDITION, ON THE 95 AND 97 BACKHOES ONLY, THERE ARE SERIAL NUMBERS ON THE SWING CYLINDER.

WHENEVER SERIAL NUMBERS ARE REQUIRED, SUCH AS ON WARRANTY CLAIMS OR CORRESPONDENCE PERTAINING TO THE LOADER BACKHOE, IT IS EXTREMELY IMPORTANT THAT ALL LETTERS AND NUMERALS IN THE SERIAL NUMBER OF THE COMPONENT INVOLVED BE FURNISHED. THIS POINT CANNOT BE OVEREMPHASIZED.

LEFT-HAND SIDE, RIGHT-HAND SIDE, FRONT AND REAR OF THE LOADER BACKHOE ARE DETERMINED BY FACING IN THE DIRECTION OF THE LOADER BACKHOE FORWARD TRAVEL.

LEFT SIDE, RIGHT SIDE, FRONT AND REAR OF THE BACKHOE AND BACKHOE COMPONENTS ARE DETERMINED WHEN SEATED IN THE BACKHOE OPERATING POSITION.

### CHASSIS SERIAL NUMBER

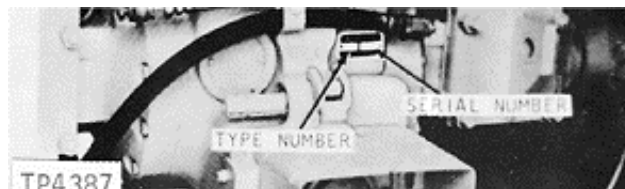


1. DIGIT 1 DESIGNATES TRACTOR.
2. DIGIT 2 DESIGNATES THE TRACTOR SERIES.
3. DIGIT 3 DESIGNATES THE FUEL.
4. DIGIT 4 DESIGNATES THE TRANSMISSION.
5. DIGIT 5 DESIGNATES THE SERIAL NUMBER.
6. DIGIT 6 DESIGNATES THE MANUFACTURER.

JD500 SERIES-A  
15

1 - GASOLINE  
3 - DIESEL  
C - COLLAR SHIFT  
P - POWER SHIFT

R - JOHN DEERE WATERLOO TRACTOR WORKS



THE CHASSIS SERIAL NUMBER IS STAMPED ON A PLATE AT THE REAR OF THE TRANSMISSION CASE.

### ENGINE DISPLACEMENT

THE DIESEL ENGINE DISPLACEMENT IS 270 CUBIC INCHES (4 425 CM<sup>3</sup>)  
THE GASOLINE ENGINE DISPLACEMENT IS 241 CUBIC INCHES (3 950 CM<sup>3</sup>)

### ENGINE SERIAL NUMBER LOCATION

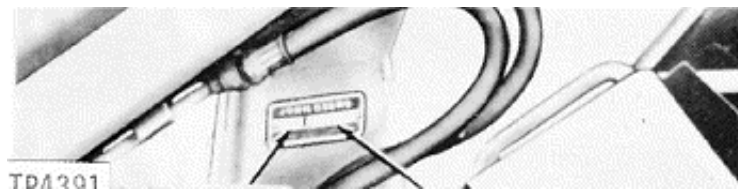


THE ENGINE SERIAL NUMBER IS STAMPED ON THE RIGHT-HAND SIDE OF THE CYLINDER BLOCK BELOW THE ALTERNATOR.

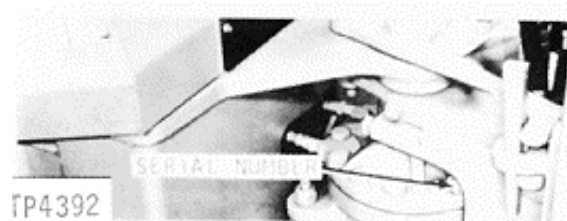
### BACKHOE SERIAL NUMBER PLATE



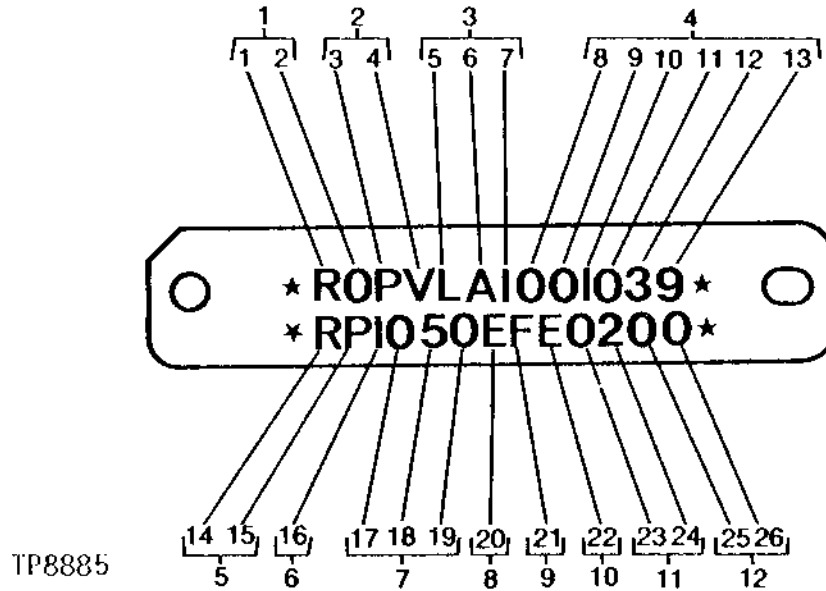
### LOADER SERIAL NUMBER PLATE



### SWING CYLINDER SERIAL NUMBER PLATE (95 AND 97 BACKHOES)

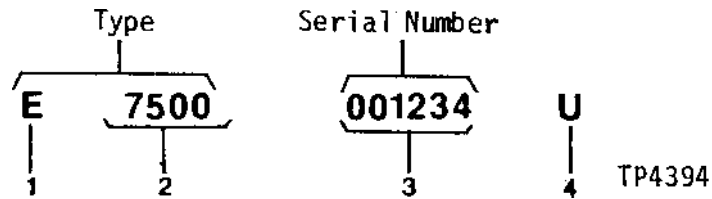


## REPLACEMENT HYDRAULIC PUMP SERIAL NUMBER



- |  |  |
|--|--|
| <p>1. DIGITS 1 AND 2 DESIGNATE THE PRODUCING UNIT.</p> <p>2. DIGITS 3 AND 4 DESIGNATE THE PUMP TYPE.</p> <p>3. DIGITS 5, 6 AND 7 DESIGNATE THE PUMP MODEL NUMBER.</p> <p>4. DIGITS 8 THROUGH 13 DESIGNATE THE PUMP SERIAL NUMBER.</p> <p>5. DIGITS 14 AND 15 DESIGNATE THE PUMP DESIGN.</p> <p>6. DIGIT 16 DESIGNATES THE PUMP CLASSIFICATION.</p> <p>7. DIGITS 17, 18 AND 19 DESIGNATE THE METRIC DISPLACEMENT PER REVOLUTION.</p> <p>8. DIGIT 20 DESIGNATES THE PORT ARRANGEMENT ON THE PRIMARY HOUSING.</p> <p>9. DIGIT 21 DESIGNATES THE PORT ARRANGEMENT ON THE SECONDARY HOUSING.</p> <p>10. DIGIT 22 DESIGNATES THE PUMP ROTATION.</p> <p>11. DIGITS 23 AND 24 DESIGNATE THE CONTROL VALVE OPTION.</p> <p>12. DIGITS 25 AND 26 ARE BLANK.</p> | <p>COMPONENT WORKS</p> <p>VARIABLE DISPLACEMENT</p> <p>LA1</p> <p>000000</p> <p>RADIAL PUMP</p> <p>1</p> <p>050 CM3</p> <p>E</p> <p>F</p> <p>E</p> <p>02</p> |
|--|--|

## BACKHOE OR LOADER SERIAL NUMBER



1. DIGIT 1 DESIGNATES EQUIPMENT.
2. DIGIT 2 DESIGNATES THE MACHINE.

E - EQUIPMENT  
7500 LOADER  
0095 BACKHOE  
0097 BACKHOE  
9700 BACKHOE

3. DIGIT 3 DESIGNATES THE MACHINE.
4. DIGIT 4 DESIGNATES THE MANUFACTURER.

U - INDUSTRIAL EQUIPMENT WORKS

## SERIAL NUMBERS

TWO COMPONENTS ON THE MACHINE HAVE MODEL NUMBERS AS FOLLOWS:

HYDRAULIC PUMP (COLLAR SHIFT) ..... 4MP1  
HYDRAULIC PUMP (POWER SHIFT) ..... 6MP1

EACH PUMP MANUFACTURED BEARS THE APPROPRIATE MODEL AS GIVEN ABOVE UNTIL A DESIGN CHANGE IS MADE. AFTER THE DESIGN OF ANY ONE OF THE ABOVE COMPONENTS IS CHANGED, THE APPROPRIATE MODEL NUMBER IS CHANGED AND EACH COMPONENT OF THE NEW DESIGN BEARS THE NEW NUMBER.

## **SERIAL NUMBER LISTING INFORMATION**

SERIAL NUMBER INFORMATION IS LISTED TO SHOW ON WHICH MACHINES EACH PART CAN BE USED; FOR EXAMPLE:

- THE PART CAN BE USED ON ALL MACHINES.
- 000000- THE PART CAN BE USED ON ALL MACHINES BEGINNING WITH THE SERIAL NUMBER LISTED.
- 000000 THE PART CAN BE USED ON ALL MACHINES UP TO AND INCLUDING THE SERIAL NUMBER LISTED.
- 000000-000000 THE PART CAN BE USED ON ALL MACHINES BETWEEN AND INCLUDING THE SERIAL NUMBERS LISTED.

WHEN XXXXXX'S ARE LISTED IN PLACE OF A SERIAL NUMBER, A SERIAL NUMBER CHANGE WAS MADE BUT THE EXACT SERIAL NUMBER WAS NOT AVAILABLE WHEN THE CATALOG WAS PRODUCED.

## **DIRECTION ARROW**

ARROWS ARE USED WITH ILLUSTRATIONS TO INDICATE THE FRONT OF THE UNIT. "RIGHT-HAND" AND "LEFT-HAND" SIDES ARE DETERMINED BY FACING IN THE DIRECTION OF MACHINE FORWARD TRAVEL.

EXCEPTION: FOR ALL BACKHOE PARTS, "RIGHT-HAND" AND "LEFT-HAND" SIDES, "FRONT" AND "REAR" ARE DETERMINED WHEN SEATED FOR BACKHOE OPERATION.

## **BOX-ENCLOSED ILLUSTRATIONS**

A KEY NUMBER, SHOWN IN THE PARTS LIST, IS ASSIGNED TO A BOX ENCLOSING ALL PARTS SOLD AS A SERVICE ASSEMBLY.

## **BOLT AND CAP SCREW STRENGTH IDENTIFICATION**

BOLTS AND CAP SCREWS REQUIRED TO HAVE HIGH-STRENGTH QUALITIES EQUIVALENT TO SAE GRADE 8 ARE IDENTIFIED THROUGHOUT THIS CATALOG BY THE DESCRIPTION HS SAE 8. ALL STANDARD BOLTS AND CAP SCREWS ARE SAE GRADE 5 OR LOWER.

## **COMPLETE GOODS LISTINGS**

COMPLETE GOODS ARE LISTED IN BOLD FACE TYPE. ORDER SEPARATELY. DO NOT INCLUDE ON REPLACEMENT PARTS ORDER.

## **SI UNITS OF MEASURE**

METRIC DIMENSIONS ARE GIVEN, WHERE APPLICABLE, THROUGHOUT THIS PARTS CATALOG.

## **CHANGE INDICATOR LINE**

CHANGES AFFECTING THE ORDERING OF PARTS ARE IDENTIFIED BY VERTICAL LINES MARKED IN THE LEFT-HAND MARGIN OF REVISED PARTS LISTING IMAGES. A LINE IS ALSO AT THE LEFT-HAND EDGE OF THE SAME PART NUMBER IN THE NUMERICAL INDEX TO SHOW THE LOCATION OF REVISED INFORMATION.

## **COMPLETE COMPONENTS**

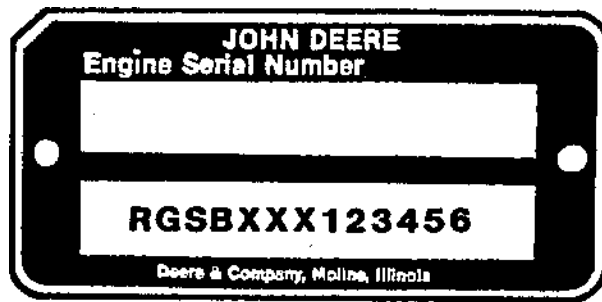
THIS CATALOG LISTS COMPLETE COMPONENTS IN A SPECIAL SECTION. THE PURPOSE OF THIS SECTION IS TO AID DEALERS IN PLANNING WHAT COMPONENTS TO STOCK FOR THEIR COMPONENT EXCHANGE PROGRAM. WHILE MOST OF THE ITEMS ARE NORMALLY STOCKED AT THE JOHN DEERE PARTS DISTRIBUTION WAREHOUSE (PDW), SOME COMPONENTS ARE ONLY AVAILABLE FROM FACTORIES. IT IS ESSENTIAL TO PLAN AHEAD IN DEVELOPING A COMPONENT EXCHANGE PROGRAM BECAUSE SOME OF THE FACTORY-SUPPLIED COMPONENTS HAVE AN EXTENDED LEAD TIME.

IN ADDITION TO CURRENTLY AVAILABLE COMPONENTS, THIS SECTION ALSO CONTAINS NUMBERS FOR COMPONENTS WHICH HAVE BEEN SUBSTITUTED AND/OR ARE NO LONGER AVAILABLE. PARTS NO LONGER AVAILABLE ARE CODED AND ARE INCLUDED FOR REFERENCE ONLY.

FOR ADDITIONAL INFORMATION ON SPECIAL ORDERING PROCEDURES FOR THESE PARTS, PLEASE CONSULT YOUR PARTS ADMINISTRATION MANUAL OR CONTACT YOUR JOHN DEERE INDUSTRIAL REGION PRODUCT SUPPORT DEVELOPMENT MANAGER.



## SHORT BLOCK SERIAL NUMBER PLATE



RGP2856

A SHORT BLOCK SERIAL NUMBER PLATE IS ATTACHED TO REPLACEMENT SHORT BLOCK ASSEMBLIES. THIS NUMBER WILL BE REFERRED TO WHEN NEW PARTS AFFECT THE SHORT BLOCK ASSEMBLY. THE PREVIOUS ENGINE SERIAL NUMBER SHOULD BE STAMPED INTO THE BLANK SPACE PROVIDED, AS A REFERENCE FOR YOUR DEALER.

- |  |                            |
|--|----------------------------|
| 1. DESIGNATES ENGINE MANUFACTURE.      | RG - WATERLOO ENGINE WORKS |
| 2. DESIGNATES REPLACEMENT SHORT BLOCK. | SB                         |
| 3. DESIGNATES CUBIC INCH.              | XXX                        |
| 4. DESIGNATES ENGINE SERIAL NUMBER.    |                            |

## SECTIONAL INDEX

GENERAL INFORMATION . . . . .	5
ENGINE . . . . .	10
AIR CLEANER, MUFFLER AND MANIFOLDS . . . . .	15
GOVERNOR AND SPEED CONTROL LINKAGE . . . . .	20
COOLING SYSTEM . . . . .	25
FUEL SYSTEM . . . . .	30
TRANSMISSION, DIFFERENTIAL AND REAR AXLE . . . . .	35
STEERING . . . . .	40
HYDRAULIC SYTEM . . . . .	45
WHEELS, WEIGHTS, AXLES AND DRAWBAR . . . . .	50
BRAKES . . . . .	55
HOOD, GRILLE, CANOPY, FENDERS AND SEAT . . . . .	60
ELECTRICAL SYSTEM . . . . .	65
GASKET SETS, DECALS, OIL, STORAGE KIT AND ACCESSORIES . . . . .	70
LOADER . . . . .	75
BACKHOE . . . . .	80
NUMERICAL INDEX . . . . .	85